



环球链条

UNIVERSAL CHAINS

环球传动 创造美好

UNIVERSAL CHAINS,
CREATE CHAIN TO CONNECT BEAUTIFUL LIFE!

环球传动

江苏省泰州市姜堰经济开发区姜溱路18号

热线电话: 400-0599-988

官网: www.universalchain.com.cn

邮箱: kf01@universalchain.com.cn

UNIVERSAL TRANSMISSION

18 jiangqin Road, Jiangyan Economic Development Zone,
Taizhou, Jiangsu, China

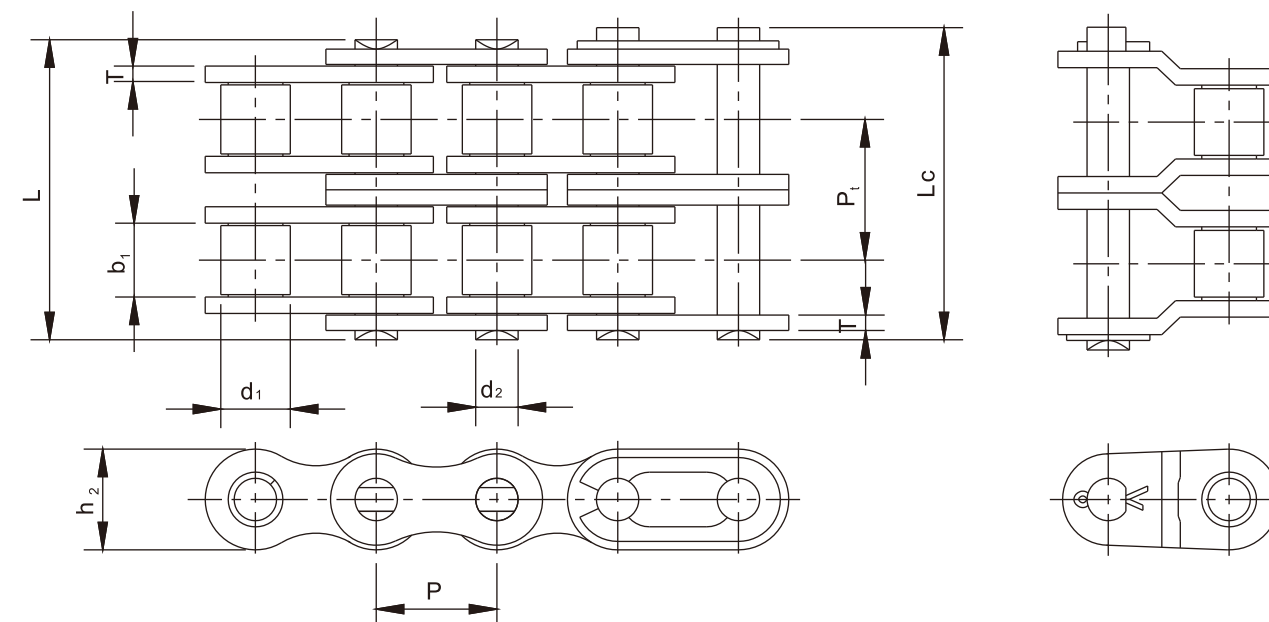
Tel: +86-512-69006900

Website: www.universalchain.net

E-mail: kf02@universalchain.com.cn

手扶拖拉机链、旋耕机链

Walking tractor chains & rotary tillage chains



农机链

AGRICULTURAL MACHINERY CHAINS



UNIVERSAL CHAINS

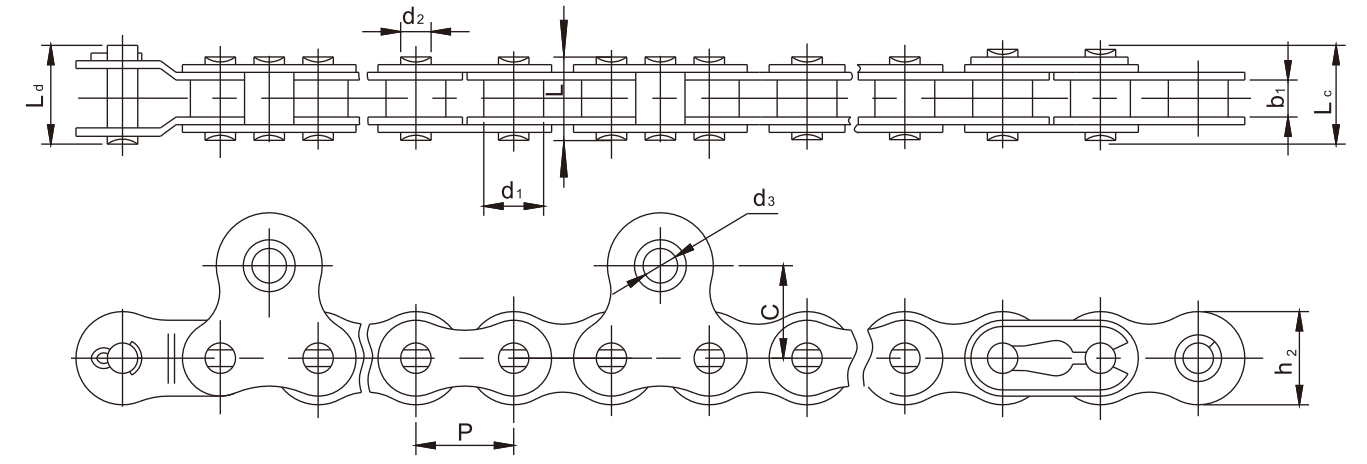
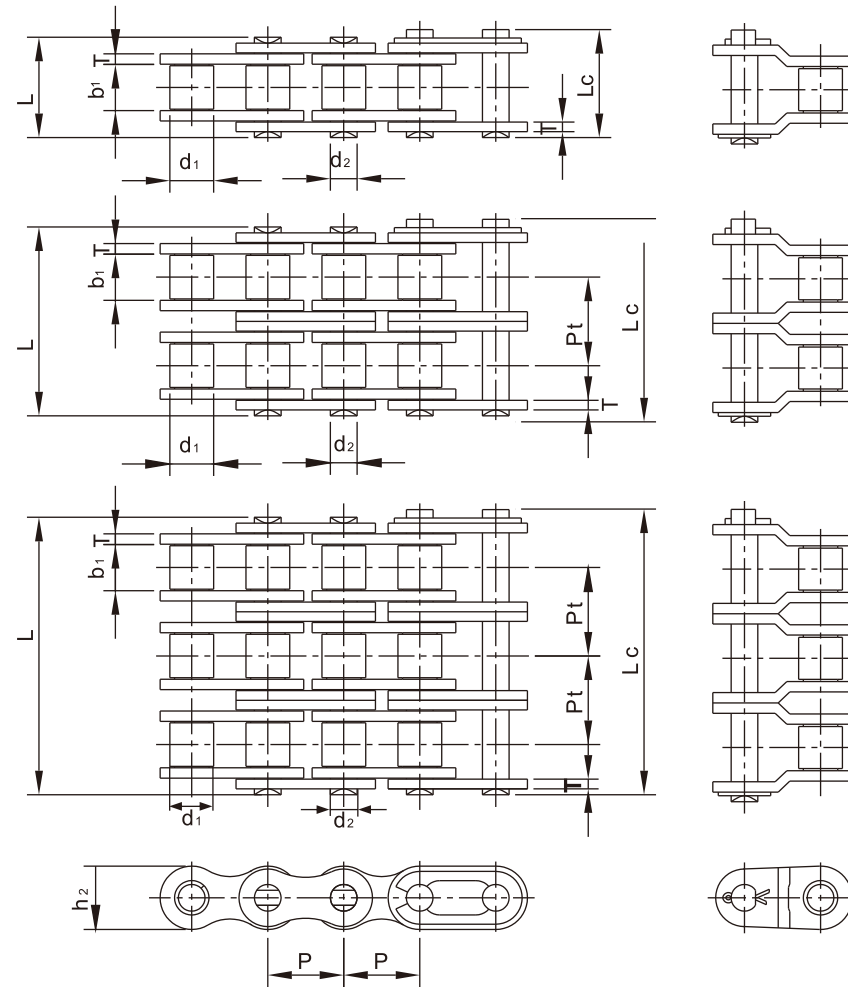
ISO/DIN 链号 ISO/DIN Chain No.	节距 Pitch	滚子直径 Roller diameter	内节内宽 Width between inner plates	销轴直径 Pin diameter	销轴长度 Pin length		链板高度 Plate depth	链板厚度 Plate thickness	排距 Transverse pitch	抗拉强度 Ultimate tensile strength	平均抗拉强度 Average tensile strength	每米重量 Weight per meter
	P	d ₁ max	b ₁ min	d ₂ max	L max	L _c max	h ₂ max	T	P _t	Q(ISO/DIN) min	Q ₀	q ≈
	mm	mm	mm	mm	mm	mm	mm	mm	mm	kN	kN	kg/m
08B-2	12.70	8.51	7.75	4.45	31.00	33.00	11.81	1.60	13.92	31.1/32.0	37.4	1.34
12A-2	19.05	11.91	12.57	5.94	48.80	51.50	18.08	2.44	22.78	62.3/63.6	82.4	2.92
12AH-2	19.05	11.91	12.57	5.94	56.00	60.60	18.08	3.26	26.11	62.3/63.6	85.0	3.71
16A-2	25.40	15.88	15.75	7.92	62.70	67.10	24.13	3.26	29.29	111.2/113.4	143.0	5.15

联合收割机标准链

Combine standard chains

扶禾链

Hoist chains for harvester



ISO/DIN 链号ISO/DIN Chain No.	节距	滚子直径	内节内宽	销轴直径	销轴长度		链板高度	链板厚度	排距 Transverse pitch	抗拉强度 Ultimate tensile strength	平均抗拉强度 Average tensile strength	每米重量 Weight per meter
	P	d1	b1	d2	L	Lc	h2	T				
	mm	mm	mm	mm	mm	mm	mm	mm				
08B-1	12.70	8.51	7.75	4.45	16.70	18.20	11.80	1.60	-	17.80/18.00	19.40	0.69
08B-3	12.70	8.51	7.75	4.45	45.10	46.10	11.80	1.60	13.92	44.50/47.50	57.80	2.03
10A-1	15.875	10.16	9.40	5.08	20.70	22.20	15.09	2.06	-	21.80/22.20	29.40	1.02
10A-2	15.875	10.16	9.40	5.08	38.90	40.40	15.09	2.06	18.11	43.60/44.40	58.10	2.00
12A-1	19.05	11.91	12.57	5.94	25.90	27.70	18.00	2.44	-	31.10/31.80	41.50	1.50
16A-1	25.40	15.88	15.75	7.92	32.70	35.00	24.00	3.26	-	55.60/56.70	69.40	2.60
16AH-1	25.40	15.88	15.75	7.92	36.20	37.70	24.00	4.00	-	55.60/56.70	71.40	3.10

ISO/DIN 链号ISO/DIN Chain No.	节距	滚子直径	内节内宽	销轴直径	销轴长度			内链板高度	附板尺寸		抗拉强度	平均抗拉强度
	P	d1	b1	d2	L	LC	Ld	h2	d3	C	Q	Q0
	mm	mm	mm	mm	mm	mm	mm	mm	mm	mm	kN	kN
YM415	12.7	7.77	4.8	3.95	13.3	15.10	16.2	12.0	3.96	12.0	15.68	16.2
#415S(a)	12.7	7.77	4.8	3.95	13.3	14.40	-	10.4	4.45	12.0	14.20	16.2
#415S(b)	12.7	7.77	4.8	3.95	13.3	14.40	-	10.4	4.45	12.0	14.20	16.2

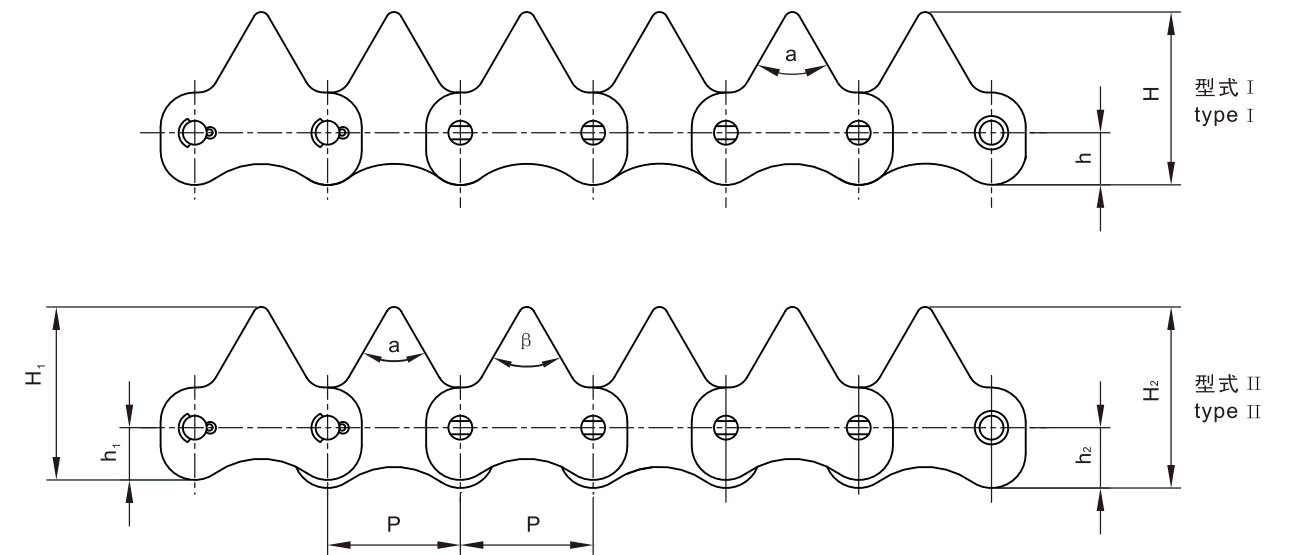
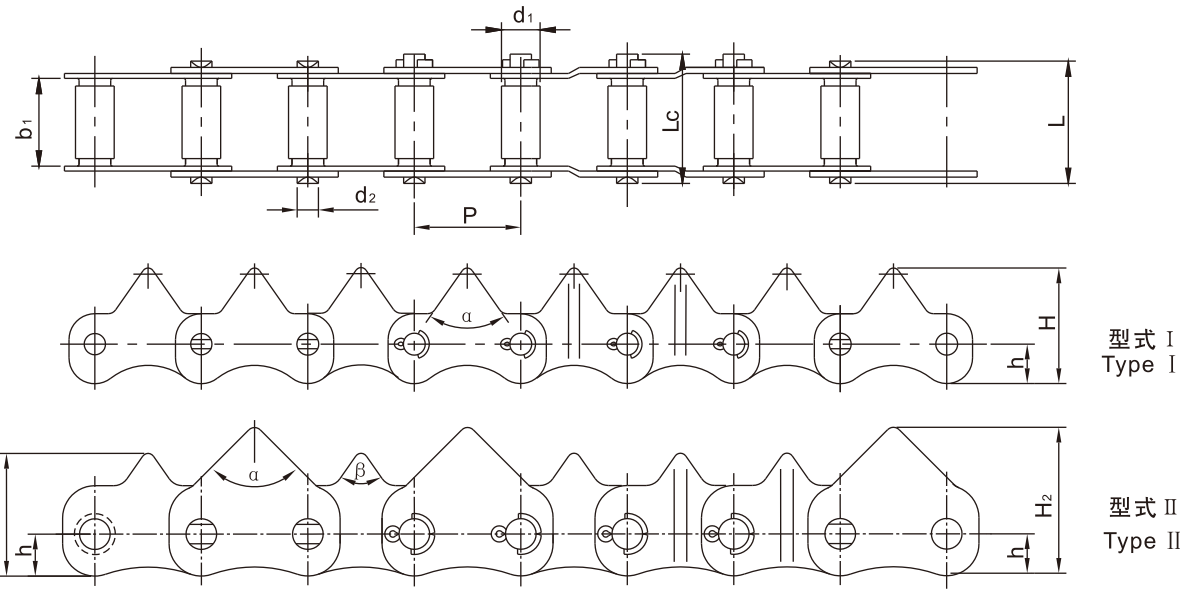
注：#415S(a),415(b)只是附板数量及节数不同。
#415S(a),415(b) is only different from number of attachment and link.

水稻收割机链

Rice harvester chains

水稻收割机链

Rice harvester chains



型式 I
Type I

型式 II
Type II

型式 I
type I

型式 II
type II

ISO/DIN 链号 ISO/DIN Chain No.	节距 Pitch	滚子直径 Roller diameter	内节内宽 Width between inner plates	销轴直径 Pin diameter	销轴长度 Pin length		齿形角 Tooth angle	链板尺寸 Plate dimensions		抗拉强度 Ultimate tensile strength	型式 type
	P	d ₁ max	b ₁ min	d ₂ max	L max	Lc max	α	h	H	Q min	
	mm	mm	mm	mm	mm	mm	Angle	mm	mm	kN	
3318T	33	10.1	18	7	29.5	32.0	70°	13	38	19.6	I
3322T	33	10.1	22	7	33.5	36.0	70°	13	38	19.6	I
3325T	33	10.1	25	7	36.5	39.0	70°	13	38	19.6	I
3325Ta	33	10.1	25	7	35.2	37.4	90°	13	38	19.6	I
3330T1	33	10.1	30	7	41.5	44.0	60°	13	43	19.6	I
3330T2	33	10.1	30	7	41.5	44.0	70°	13	38	19.6	I
3330Ta	33	12.8	30	7	39.5	42.5	70°	13	38	19.6	I
3358T	33	10.1	58	7	69.5	72.0	70°	10	43	19.6	I
3358Ta	33	10.1	58	7	68.5	70.8	75°	10	43	19.6	I
3558T	35	10.1	58	7	69.35	71.65	90°	15	48	22.5	I
3358b	33	12.8	58	9.5	70.1	72.8	α: 90° β: 75°	13	H ₁ :38 H ₂ :46	19.6	II
3358C/C*b	33	12.7	58	9.5	70.3	72.9	α: 90° β: 70°	13	H ₁ :38 H ₂ :46	19.6	II

ISO/DIN 链号 ISO/DIN Chain No.	节距 Pitch	滚子直径 Roller diameter	内节内宽 Width between inner plates	销轴直径 Pin diameter	销轴长度 Pin length		齿形角 Tooth angle	链板尺寸 Plate dimensions		抗拉强度 Ultimate tensile strength	型式 type
	P	d ₁ max	b ₁ min	d ₂ max	L max	Lc max	α	h	H	Q min	
	mm	mm	mm	mm	mm	mm	Angle	mm	mm	kN	
3330	33	12.7	30	5.94	43.5	45.6	60°	h ₁ : 13 h ₂ : 15	H ₁ : 43 H ₂ : 45	19.6	II
3330a	33	12.7	30	5.94	43.5	45.6	70°	13	38	19.6	I
3322	33	12.7	22	5.94	35.5	37.6	70°	15	40	19.6	I
3358	33	12.7	58	7.0	70.9	73.5	α: 90° β: 75°	13	H ₁ :38 H ₂ :46	19.6	II

GS38联合收割机链

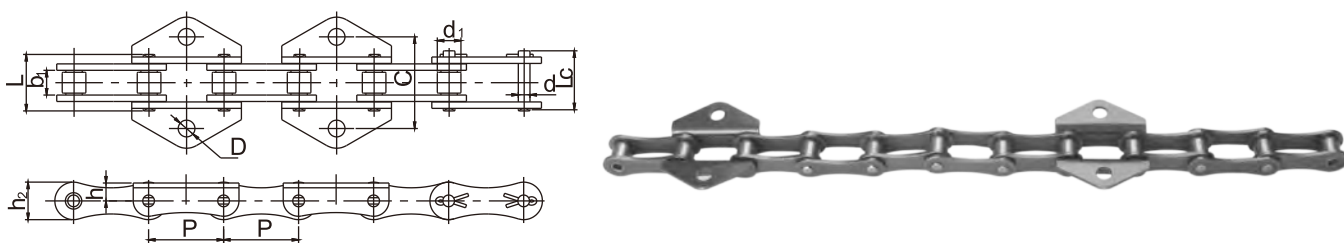
GS38 combine chains



ISO/DIN 链号ISO/DIN Chain No.	P	G	2C	2X	h4	d4
	mm	mm	mm	mm	mm	mm
GS38P2	38.0	17.2	52	72	15	11.1



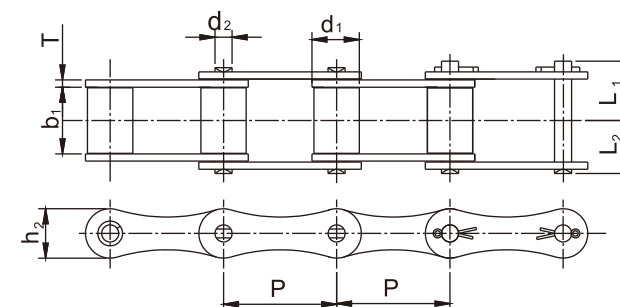
ISO/DIN 链号ISO/DIN Chain No.	P	C1	2C	2X	α	d4
	mm	mm	mm	mm	Angle	mm
GS38Ld2	38.0	30	52	72	47°	6.5



ISO/DIN 链号ISO/DIN Chain No.	P	b1	d1	d	L	Lc	h2	h	C	D
	mm	mm	mm	mm	mm	mm	mm	mm	mm	mm
212AWK	38.1	12.75	11.91	5.94	25.60	27.70	18.08	10.00	45.00	8.50

MR型、RF型及其带附板链节

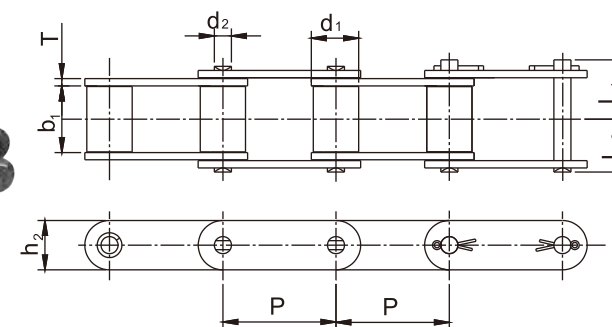
MR type, PF type chains & links with attachment



1.MR型 MR Type



2.RF型 RF Type



ISO/DIN 链号ISO/DIN Chain No.	节距 Pitch	滚子直径 Roller diameter	内节内宽 Width between inner plates	销轴 Pin		链板 plate		抗拉强度 Ultimate tensile strength	每米重量 Weight per meter	
	P mm	d1 mm	b1 mm	d2 mm	L1 mm	L2 mm	T mm	h2 mm	Q(min) kgf	q kg/m
S32(MR32)	29.21	11.43	15.9	4.44	14.45	13.05	1.5	12.8	900	0.75
S42(MR42)	34.925	14.27	19.1	7.00	19.05	16.85	2.5	19.0	3,000	1.61
S52(MR52)	38.10	15.24	22.2	5.72	20.80	18.40	2.5	16.4	2,000	1.57
S55(MR55)	41.40	17.78	22.2	5.72	20.80	18.40	2.5	16.6	2,000	1.64
S45(MR45)	41.40	15.24	22.2	5.72	20.80	18.40	2.5	16.6	2,000	1.44
S62(MR62)	41.91	19.05	25.4	5.72	20.75	20.05	2.5	16.8	2,900	1.87
C550(RF550)(CA550)	41.40	16.80	20.2	7.15	20.85	17.35	2.7	20.0	5,100	1.95
C620(RF620)(CA620)	42.01	17.68	25.0	7.15	24.15	21.05	3.2	20.0	5,100	2.38

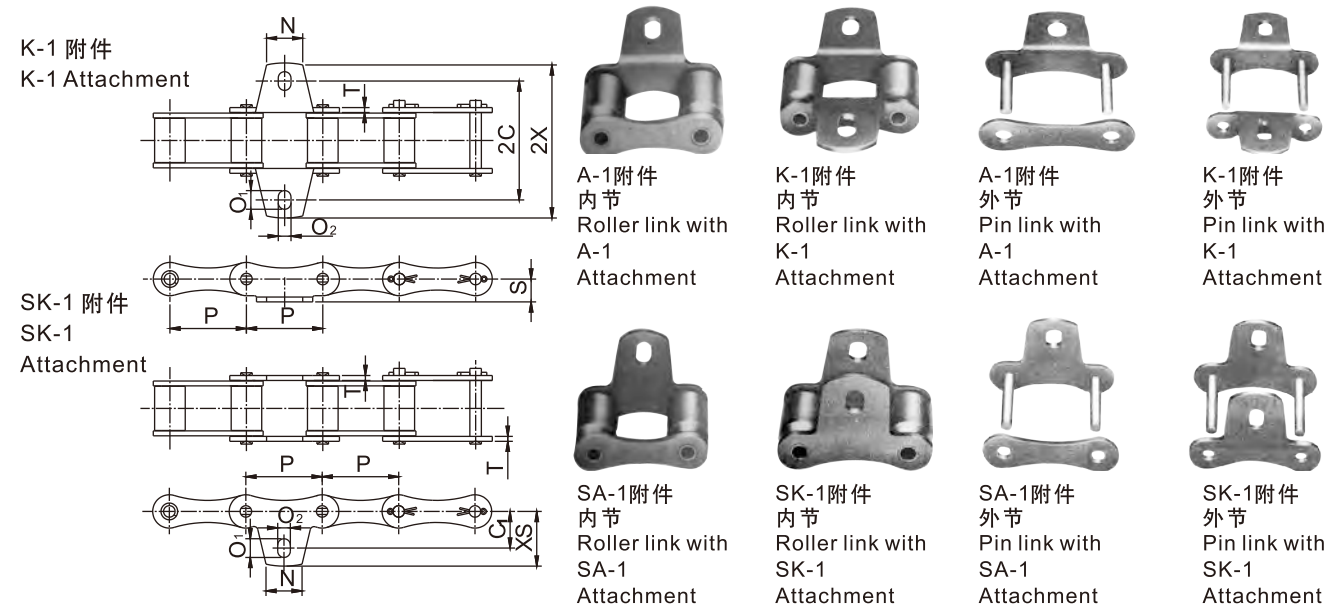
MR型、RF型及其带附板链节

MR type, PF type chains & links with attachment

S型钢制农机链附件

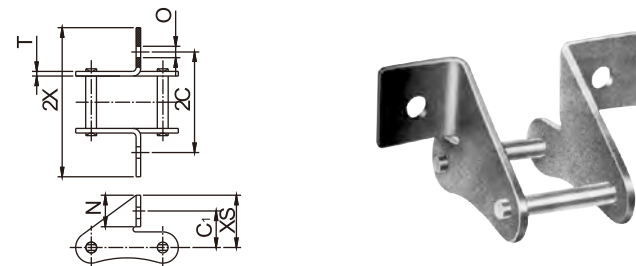
S type steel agricultural chains with attachment

3.附件连接 Attachment links

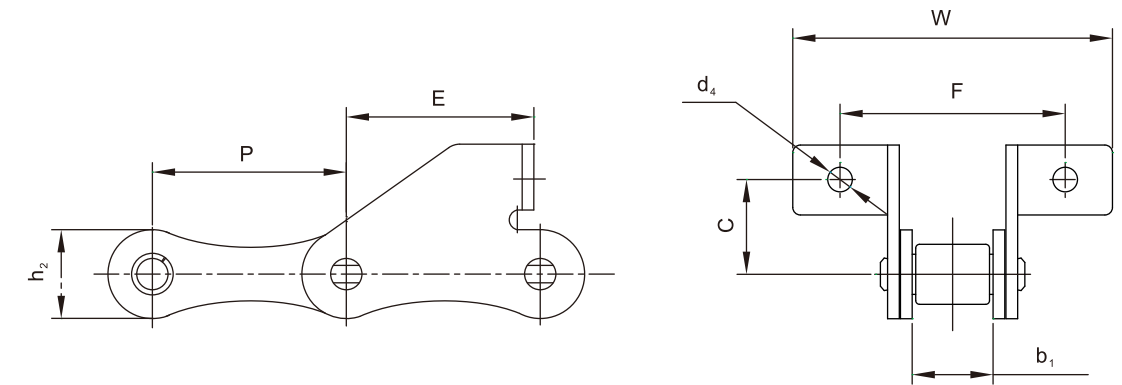


ISO/DIN 链号ISO/DIN Chain No.	节距 Pitch	附件尺寸 Attachment dimensions									每件附加重量 公斤/每件 Additional weight per A-Attachment kg/att
		P mm	2C mm	C1 mm	C2 mm	S mm	N mm	O mm	T mm	2X mm	
S32(MR32)	29.21	42.86	17.3	17.0	6.80	5.2	8.6	1.5	59.9	25.9	0.003
S42(MR42)	34.925	54.00	23.6	23.6	10.10	6.9	14.0	2.5	75.0	34.2	0.013
S52(MR52)	38.10	58.70	22.1	16.0	8.50	6.9	11.4	2.5	76.5	30.8	0.010
S55(MR55)	41.40	54.00	19.8	22.0	10.10	6.9	11.4	2.5	74.0	29.9	0.012
S45(MR45)	41.40	54.00	19.8	22.0	10.10	6.9	11.4	2.5	74.0	29.9	0.010
S62(MR62)	41.91	66.70	24.6	24.0	13.20	6.9	11.4	2.5	95.3	38.6	0.011

SD附件连接 SD Attachment links



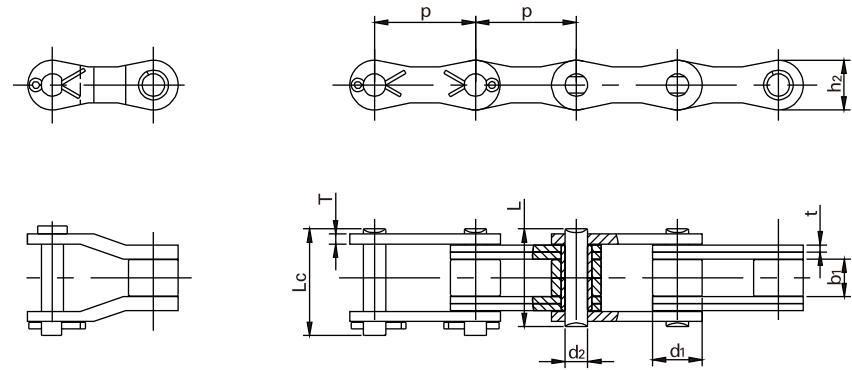
ISO/DIN 链号ISO/DIN Chain No.	节距 Pitch	附件尺寸 Attachment dimensions							每件附加重量 公斤/每件 Additional weight per A-Attachment kg/att
		P mm	2C mm	C1 mm	N mm	O mm	T mm	2X mm	
S52(MR52)	38.1	58	20	16	6.6	2.5	86	28	0.018
S55(MR55)	41.4	58	20	16	6.6	2.5	86	28	0.019
S45(MR45)	41.4	58	20	16	6.6	2.5	86	28	0.019



链号 Chain NO.	P	b1	C	E	F	W	d4	h2
	mm	mm	mm	mm	mm	mm	mm	mm
S32SD	29.21	15.88	20.0	19.2	58.0	78.0	6.4	13.2
S45W-F1	41.40	22.23	20.0	37.0	58.0	87.0	6.6	17.3
S45W-F4	41.40	22.23	20.5	33.2	58.0	85.6	6.6	17.3
S45F1	41.40	22.23	21.0	25.0	62.4	83.4	8.5	17.3
S52SD	38.10	22.23	20.0	19.2	62.0	88.5	6.4	17.3
S52F4	38.10	15.8	20.6	37.0	53.8	69.5	6.4	16.7
S52F8	38.10	22.23	20.6	37.0	60.7	76.4	6.4	17.3
S52F9	38.10	18.5	20.0	18.5	54.5	71.0	6.5	16.5
S52LSD	38.10	16.4	20.0	17.5	54.5	71.0	6.5	16.5
S55F2	41.40	22.23	20.0	37.0	58.0	87.0	6.4	17.3
S55F3	41.40	22.23	20.5	33.2	58.0	85.6	6.6	17.3
S55F4	41.40	22.23	20.0	37.0	58.0	87.0	6.6	17.3
S55F6	41.40	22.23	20.0	30.0	58.0	87.0	6.4	17.3
S55F7	41.40	22.23	20.5	33.2	62.0	85.6	6.6	17.3
S62SD	41.91	26.2	20.0	32.6	61.4	92.0	6.4	17.3

S型农机链

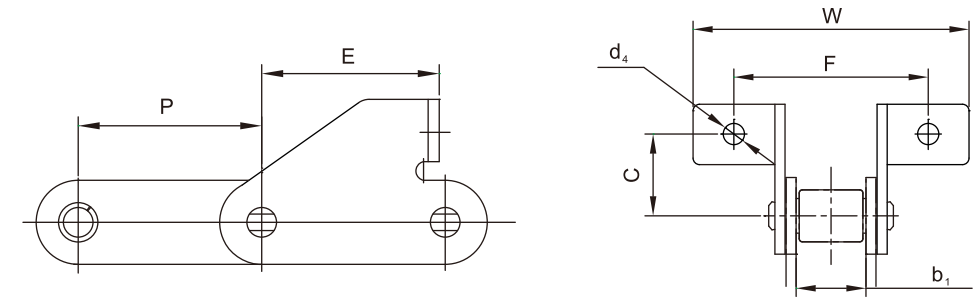
S type steel agricultural chains



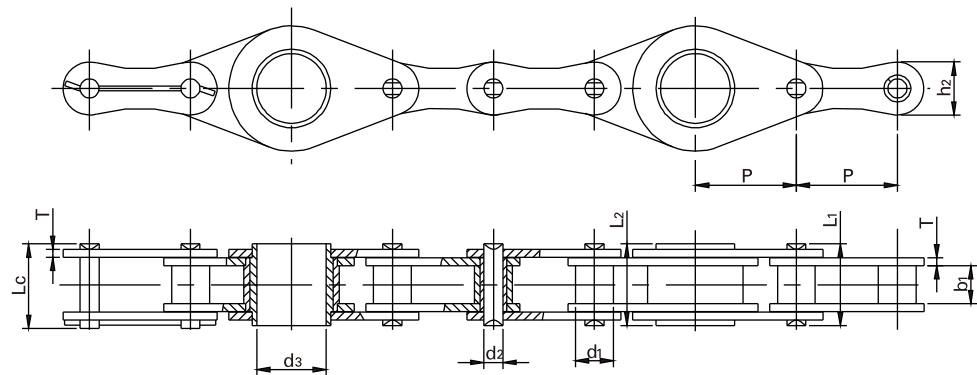
ISO/DIN 链号 ISO/DIN Chain No.	节距 Pitch	滚子直径 Roller diameter	内节内宽 Width between inner plates	销轴直径 Pin diameter	销轴长度 Pin length			内链板高度 Inner plate depth	链板厚度 Plate thickness	抗拉强度 Ultimate tensile strength
	P	d ₁ max	b ₁ min	d ₂ max	L max	L _c max	h ₂ max	T/t	Q min	
	mm	mm	mm	mm	mm	mm	mm	mm	kN	
CA650a	50.8	25.0	19.0	11.28	49.2	53.7	25.0	5.0/3.5	90.0	
CA650c		19.0							130.0	

C型钢制农机链附件

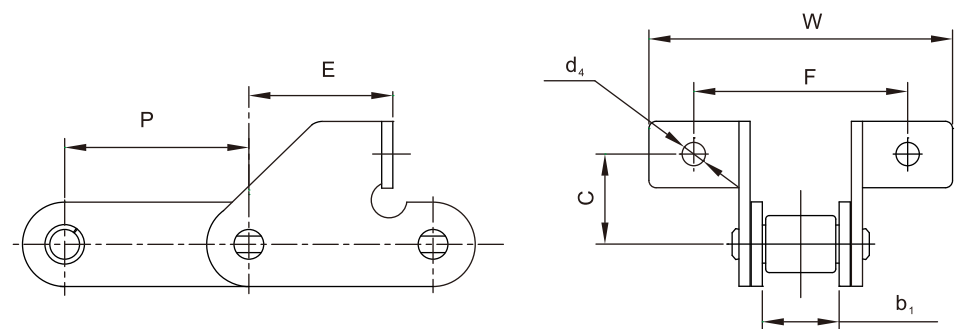
C type steel agricultural chains with attachment



ISO/DIN 链号ISO/DIN Chain No.	P	b1	E	F	W	C	d4
	mm	mm	mm	mm	mm	mm	mm
38.4RSD	38.4	19.05	38.4	52.0	71.0	24.5	8.4
38.4RSDF1	38.4	19.05	38.4	52.0	70.0	24.5	8.4
38.4VSD	38.4	18.0	38.4	52.0	71.0	24.0	8.4
38.4VBSD	38.4	19.05	38.4	52.0	71.0	25.0	8.4
38.4VBSDF1	38.4	19.05	38.4	52.0	73.0	24.0	8.3
CA550SD	41.1	19.81	36.9	47.6	68.2	31.0	8.7
CA550SDF4	41.4	19.81	36.9	47.6	89.0	31.0	8.7



ISO/DIN 链号 ISO/DIN Chain No.	节距 Pitch	滚子直径 Roller diameter	内节内宽 Width between inner plates	销轴直径 Pin diameter	空心销轴内径 Hollow pin inner diameter	销轴长度 Pin length			内链板高度 Inner plate depth	链板厚度 Plate thickness	抗拉强度 Ultimate tensile strength
	P	d ₁ max	b ₁ min	d ₂ max	d ₃ min	L ₁ max	L ₂ max	L _c max	h ₂ max	T/t	Q min
	mm	mm	mm	mm	mm	mm	mm	mm	mm	mm	kN
CA650bF1	50.8	19.05	19.05	9.54	35.0	41.1	41.1	42.6	26.7	4.00	80.0



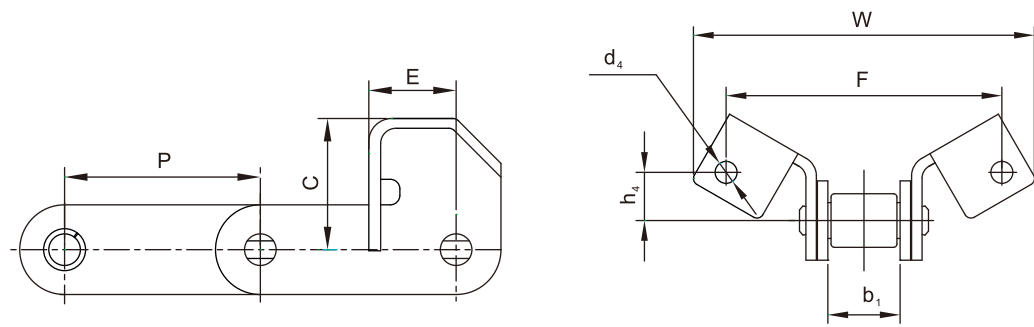
ISO/DIN 链号ISO/DIN Chain No.	P	b1	E	F	W	C	d4
	mm	mm	mm	mm	mm	mm	mm
CA550SDF1	41.4	19.81	35.0	58.0	85.0	20.5	8.5
CA550SDF2	41.4	19.81	32.5	62.0	84.0	20.0	8.6
CA550SDF3	41.4	19.81	35.0	58.0	85.0	20.5	6.5
CA550SDF6	41.4	19.81	33.0	58.0	85.0	20.5	6.5
CA550SDF7	41.4	19.81	32.5	62.0	89.0	20.0	8.6
CA550SDF5	41.1	19.81	34.0	63.0	89.0	20.0	8.0
CA550SDF8	41.4	19.81	33.0	58.0	85.9	20.5	6.5

C型钢制农机链附件

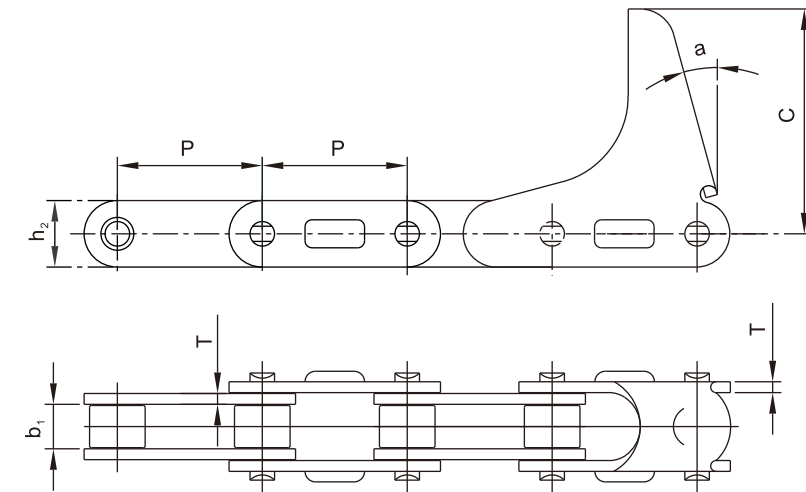
C type steel agricultural chains with attachment

C型钢制农机链附件

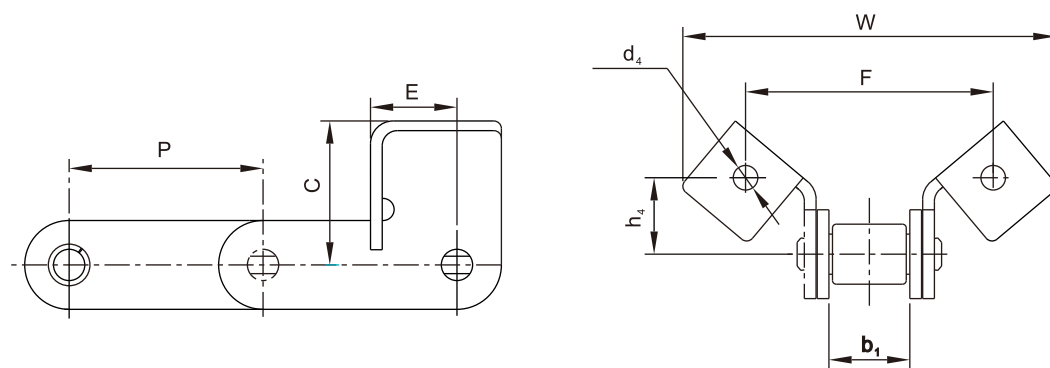
C type steel agricultural chains with attachment



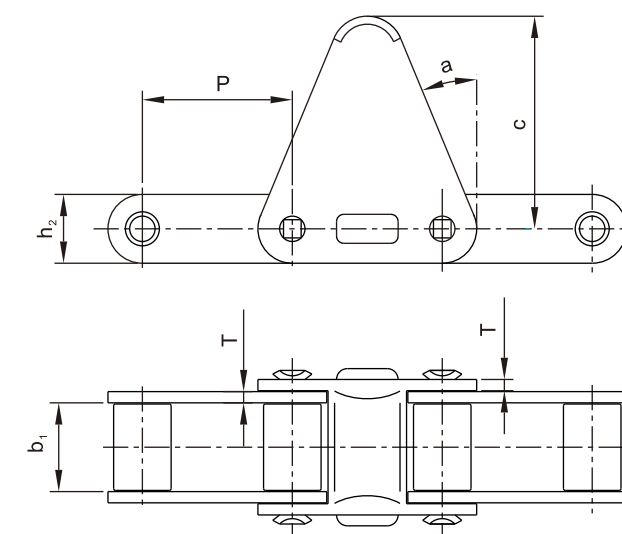
ISO/DIN 链号ISO/DIN Chain No.	P	b1	E	C	F	W	H4	d4
	mm	mm	mm	mm	mm	mm	mm	mm
CA550F14	41.40	19.81	20.24	31.75	79.40	101.60	15.90	8.33
CA550F16	41.40	20.00	22.30	39.00	78.00	109.20	17.70	8.00



ISO/DIN 链号ISO/DIN Chain No.	P	b1	h2	T	C	a
	mm	mm	mm	mm	mm	mm
CA555-C6E	41.40	12.70	19.30	3.10	63.50	15°
CA555-C6EJ	41.40	12.70	19.30	3.25	66.00	15°



ISO/DIN 链号ISO/DIN Chain No.	P	b1	E	C	F	W	H4	d4
	mm	mm	mm	mm	mm	mm	mm	mm
CA550F15	41.40	19.81	24.00	35.26	61.98	95.25	19.05	6.73
CA550F17	41.40	19.81	23.68	40.89	114.30	143.70	20.57	9.91
CA550VF13	41.40	19.05	25.40	59.60	79.35	135.45	28.60	8.74
CA550F18	41.40	19.81	24.00	35.26	61.98	95.25	19.05	8.33



ISO/DIN 链号ISO/DIN Chain No.	P	b1	h2	T	C	a
	mm	mm	mm	mm	mm	mm
CA620-C30E	42.01	24.51	20.20	3.25	58.70	22.5°

柑橘收获链、大豆收获链

Citrus chains & bean chains

特种农机滚子链系列

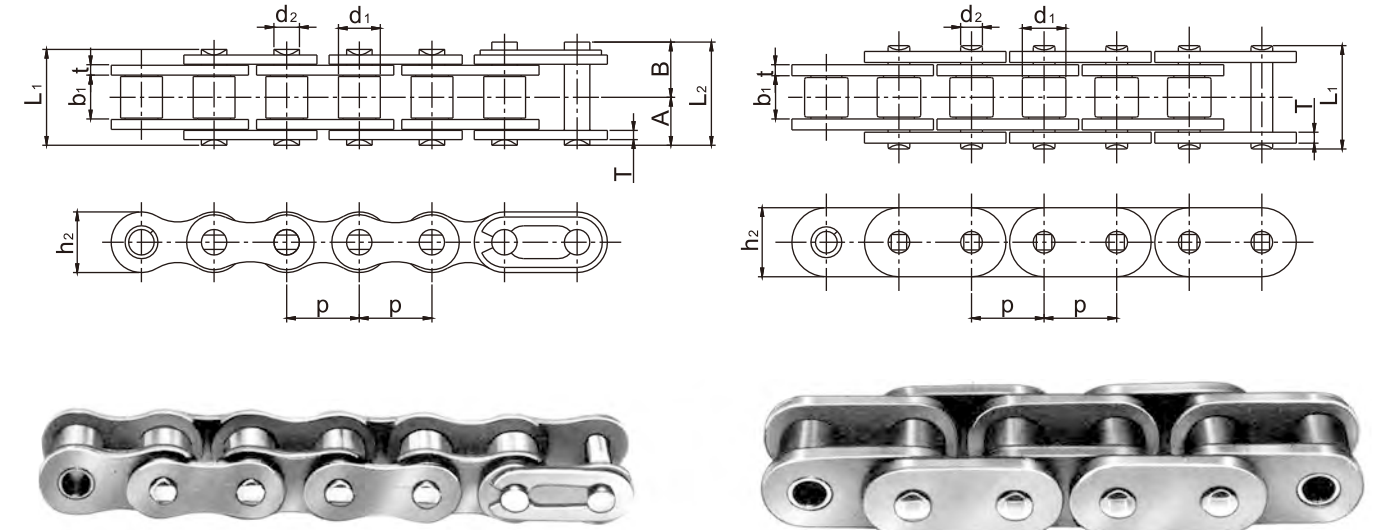
Special agricultural chains series

1、柑桔收获链 Chains for citrus harvest

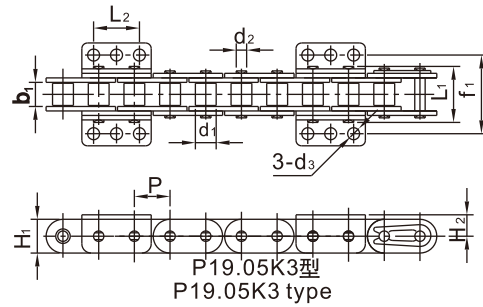
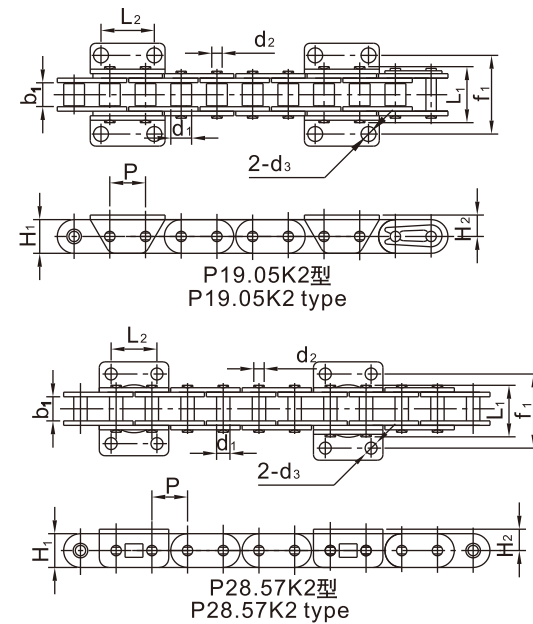


ISO/DIN 链号ISO/DIN Chain No.	节距 Pitch	尺寸参数 Dimensions								
	P mm	d1 mm	d2 mm	d3 mm	b1 mm	T mm	h2 mm	L mm	L1 mm	L2 mm
C2060HaR (C2060H W/D-5 1/2")	38.1	11.91	5.94	12.7	12.57	3.26	18.08	41.2	14.95	19.55
C2060HbR (C2060H W/D-5 9/16")	38.1	11.91	5.94	14.28	12.57	3.26	18.08	41.2	14.95	19.55

FR、FHR、HHA型式



2、大豆收获链 Chains for bean harvest



ISO/DIN 链号ISO/DIN Chain No.	节距 Pitch	滚子外径 Roller diameter	内节内宽 Width between inner plates	销轴直径 Pin diameter	长销轴长度 Width of longer pin	内链板高度 Inner plate depth	附板高度 Depth of attachment	附板孔距 Hole center distance of attachment	附板孔径 Hole diameter of attachment	二附板间孔距 Hole center distance of left and right attachment	抗拉强度 Ultimate tensile strength
	P mm	d1 max mm	b1 min mm	d2 max mm	L1 max mm	H1 max mm	H2 mm	L2 mm	d3 mm	f1 mm	Q min kN
P19.05K2	19.05	11.91	12.57	5.94	33.27	18.08	11.90	28.45	8.74	46.74	31.1
P19.05K3	19.05	11.91	12.57	5.94	33.27	18.08	11.90	22.86	6.81	42.01	31.1
*P28.572	28.57	11.68	15.87	7.94	33.40	22.23	13.67	28.57	9.04	46.74	50.0

注：带*为套筒链，其d₁为套筒外径。

Chain with * is bush chain, d₁ indicate the external diameter of bush.

ISO/DIN 链号ISO/DIN Chain No.	节距 Pitch	内节内宽 Width between inner plates	滚子直径 Roller diameter	销轴 Pin		链板 plate		平均抗拉强度 Average tensile strength	最大许用载荷 Maximum allowable load	每米重量 Weight per meter			
	P mm	b1 mm	d1 mm	d2 mm	A mm	B mm	(A+A) L1 mm	(A+B) L2 mm	t/T mm	h2 mm	Q0 kgf(kN)	Q1 kgf(kN)	q kg/m
TNJ 415	12.70	4.76	7.75	3.64	5.5	6.9	11.00	12.4	1.1	9.5	1,000(9.8)	220(2.16)	0.34
TNJ 515S		4.76	7.77	3.97	6.4	7.9	12.80	14.3	1.5	11.7	1,850(18.1)	380(3.73)	0.51
TNJ 420		6.35	7.77	3.97	7.2	8.7	14.40	15.9	1.5	11.7	1,850(18.1)	380(3.73)	0.55
TNJ 40		7.95	7.95	3.97	8.02	9.53	16.05	17.55	1.5	11.7	1,850(18.1)	370(3.63)	0.61
TNJ 40 FHR		7.95	7.95	3.97	-	-	18.10	-	2.0	12.0	2,700(26.5)	450(4.42)	0.88
TNJ 428 H		7.95	8.50	4.51	9.05	10.55	18.10	19.6	2.0	11.7	2,300(22.6)	450(4.42)	0.77
TNJ 520	15.875	9.53	10.16	5.09	8.47	9.93	16.95	18.40	2.0	14.6	3,050(29.9)	650(6.37)	0.89
TNJ 50				10.15	11.6	20.30	21.75	2.0	14.6	3,050(29.9)	650(6.37)	1.01	
TNJ 50 FHR				-	-	21.95	-	2.4	15.0	4,050(39.7)	810(7.94)	1.37	
TNJ 630 HA	19.05	9.53	11.91	5.96	-	-	25.40	-	3.2	17.5	5,100(50.0)	980(9.61)	1.65
TNJ S630 FR		9.53	14.28	7.11	-	-	27.20	-	4.0/3.2	18.4	7,000(68.6)	1,350(13.24)	2.41
TNJ S635 FR		11.10	12.70	7.11	-	-	28.60	-	4.0/3.2	18.4	7,200(70.6)	1,400(13.73)	2.33
TNJ S640 FR		12.70	14.28	7.11	-	-	28.60	-	3.2	18.4	5,900(57.9)	1,300(12.75)	2.37
TNJ 60 FHR	22.225	14.30	15.60	5.96	-	-	28.60	-	3.2	18.0	5,250(51.5)	1,250(12.26)	2.07
TNJ S745 FR				7.94	-	-	35.60	-	4.8/4.0	23.0	9,400(92.2)	1,650(16.18)	3.57
TNJ 80 HHA	25.40	15.88	18.25	9.54	-	-	42.50	-	6.0/4.8	24.0	12,500(122.6)	2,250(22.06)	4.82
TNJ S80 FHR			15.88	7.94	-	-	35.60	-	4.0	24.0	12,200(119.6)	2,050(20.10)	3.51
TNJ 90 HHA			21.30	11.11	-	-	47.40	-	6.3/5.5	30.4	17,250(169.20)	3,100(30.40)	6.53