



# 环球链条

## UNIVERSAL CHAINS

环球传动 创造美好

UNIVERSAL CHAINS,  
CREATE CHAIN TO CONNECT BEAUTIFUL LIFE!

### 环球传动

江苏省泰州市姜堰经济开发区姜溱路18号

热线电话: 400-0599-988

官网: [www.universalchain.com.cn](http://www.universalchain.com.cn)

邮箱: [kf01@universalchain.com.cn](mailto:kf01@universalchain.com.cn)

### UNIVERSAL TRANSMISSION

18 Jiangqin Road, Jiangyan Economic Development Zone,  
Taizhou, Jiangsu, China

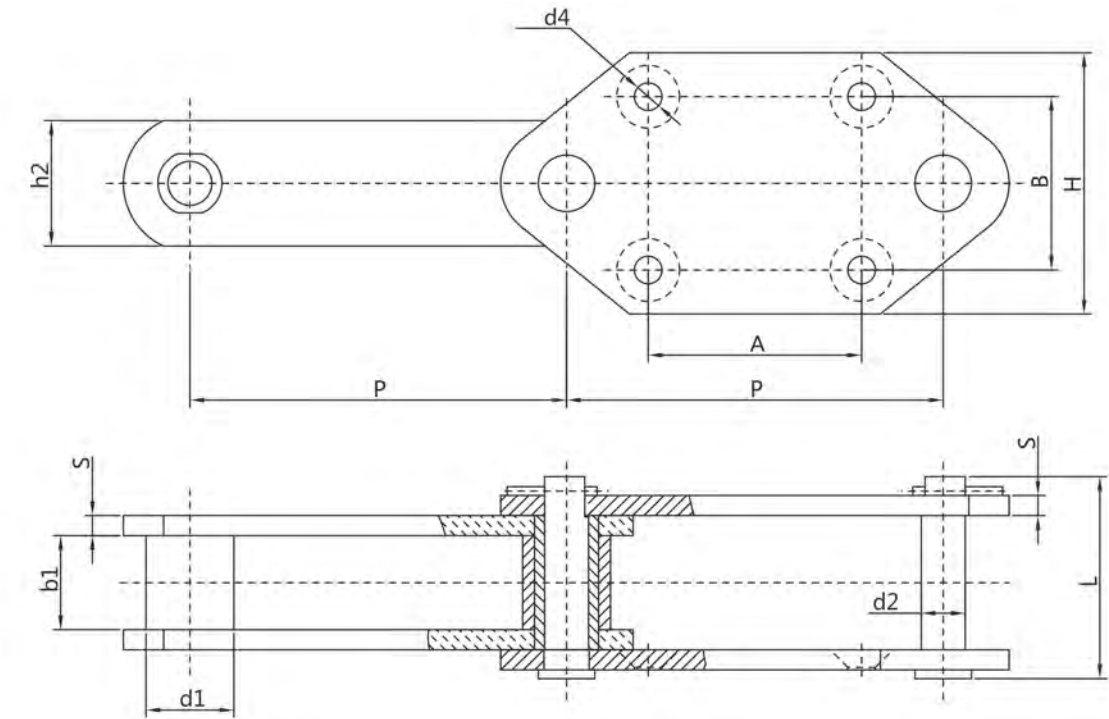
Tel: +86-512-69006900

Website: [www.universalchain.net](http://www.universalchain.net)

E-mail: [kf02@universalchain.com.cn](mailto:kf02@universalchain.com.cn)

# 斗提机（水泥）链

Bucket elevator (Cement) chains



# G 工程链

ENGINEERING CHAINS



型号	节距 P mm	内节内宽 b <sub>1</sub> mm	滚子外径 d <sub>1</sub> mm	销轴直径 d <sub>2</sub> mm	销轴长度 L mm	链板宽度 h <sub>2</sub> mm	链板厚度 S mm	附板宽度 H mm	螺孔直径* d <sub>4</sub> mm	料斗安装尺* A X B mm	破断载荷 Q KN
NE15	101.6	25	27	11.5	68	35	6	85	12	40 X 90	98
NE30	152.4	36.5	36	15.5	90	50	8	110	14	60 X 120	235
NE50	152.4	36.5	36	15.5	90	50	8	110	14	75 X 70	235
NE100	200	51.8	44.5	19.1	120	60	10	125	18	100 X 80	373
NE150	200	52.6	48.5	22.2	120	75	10	125	18	100 X 80	373
NE150强	200	57.6	48.5	22.2	125	75	10	125	18	100 X 80	539
NE200	250	67.4	63.5	31.75	146	90	12	150	18	140 X 100	735
NE300	250	67.4	63.5	31.75	146	90	12	150	18	140 X 100	863
NE300强	250	75	70	35	170	100	16	150	18	140 X 100	980
NE400	300	75	70	35	170	100	16	180	22	170 X 120	1044
NE500	300	82.5	75	38.5	177.5	115	16	180	22	170 X 120	1225

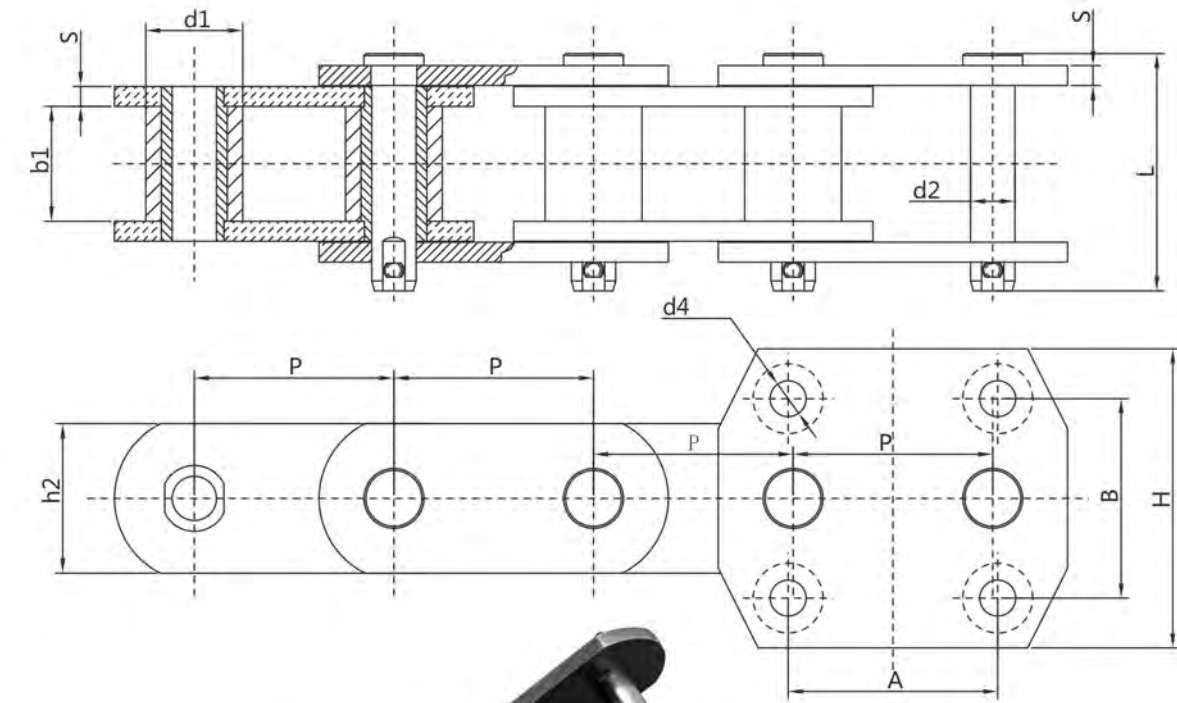
注：带\*尺寸可根据客户要求设计。

UNIVERSAL CHAINS



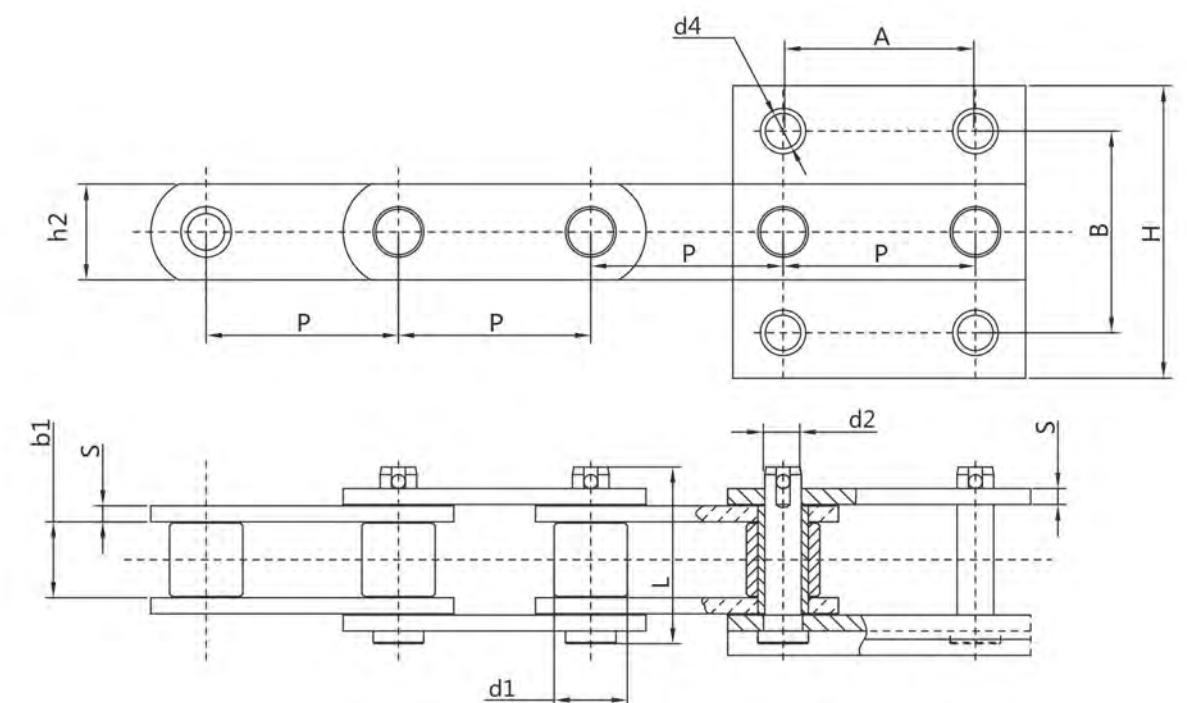
# 斗提机（水泥）链

Bucket elevator (Cement) chains



# 斗提机（水泥）链

Bucket elevator (Cement) chains



型号	节距	内节内宽	滚子外径	销轴直径	销轴长度	链板厚度	链板宽	料斗安装尺寸*	螺孔直径*	破断载荷
	P	b <sub>1</sub>	d <sub>1</sub>	d <sub>2</sub>	L	S	h <sub>2</sub> /H	A X B	d <sub>4</sub>	Q
	mm	mm	mm	mm	mm	mm	mm	mm	mm	KN
NSE100普	100	51.8	44.5	19.1	120	10	60/150	105 X 100	18	373
NSE100强	100	57.6	48.5	22.2	126	10	75/150	105 X 100	18	539
NSE200普	100	51.8	44.5	19.1	120	10	60/150	105 X 100	18	373
NSE200强	100	57.6	48.5	22.2	126	10	75/150	105 X 100	18	539
NSE300普	100	51.8	44.5	19.1	120	10	60/150	105 X 100	18	373
NSE300强	100	57.6	48.5	22.2	126	10	75/150	105 X 100	18	539
NSE400普	125	67.4	63.5	31.75	146	12	90/180	130 X 125	18	735
NSE400强	125	75	70	35	170	16	100/180	130 X 125	18	980
NSE500普	125	67.4	63.5	31.75	146	12	90/180	130 X 125	18	735
NSE500强	125	75	70	35	170	16	100/180	130 X 125	18	980
NSE600普	125	67.4	63.5	31.7	146	12	90/180	130 X 125	18	735
NSE600强	125	75	70	35	170	16	100/180	130 X 125	18	980
NSE700	125	82.5	75	38.5	177.5	16	120/210	130 X 150	20	1176
NSE800	150	82.5	75	38.5	177.5	16	120/225	160 X 150	22	1176
NSE900	150	82.5	84	44	185.5	18	130/225	-	-	1568
NSE1000	150	88	86	48	194	18	130/225	-	-	1764
(链号) C150H4	150	82.5	75	38.5	170.5	16	102/224	160 X 150	22	1200

注：带\*尺寸可根据客户要求设计。

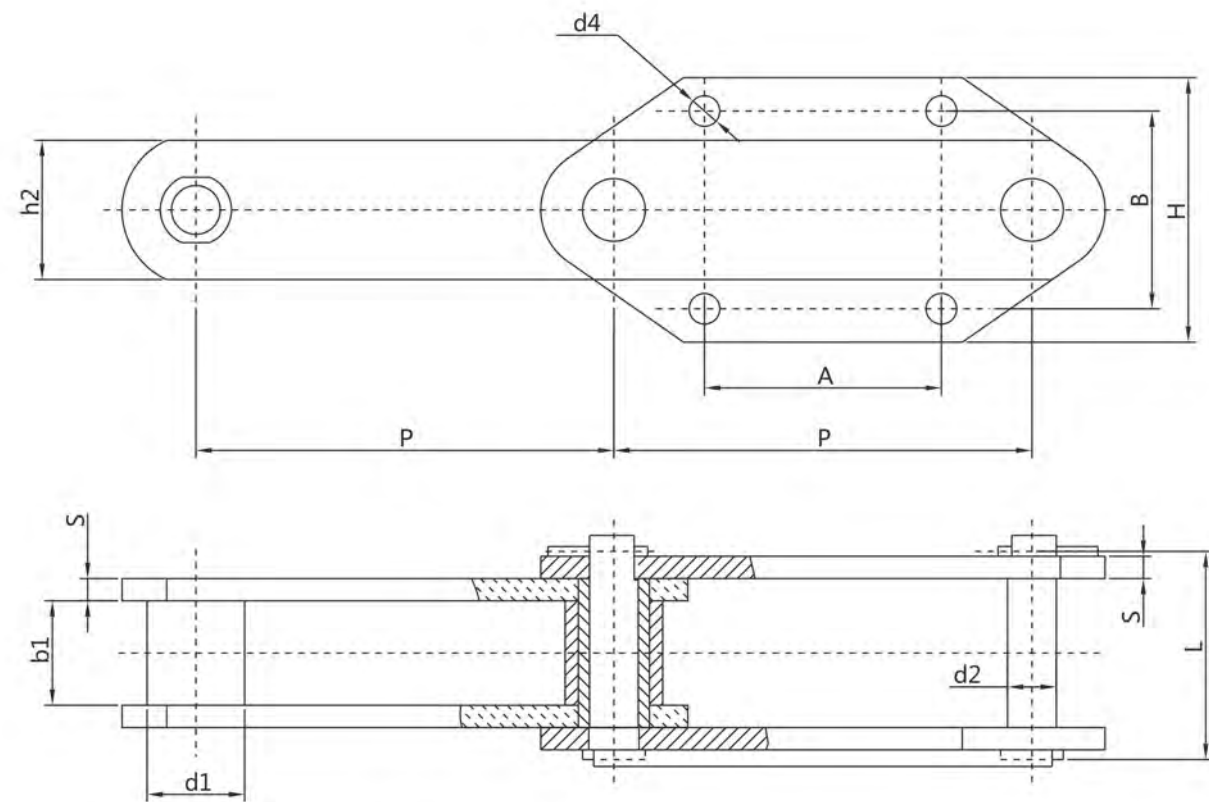
型号	节距	内节内宽	滚子直径	销轴长度	销轴直径	链板宽度	链板厚度	附板宽度	附孔直径*	料斗安装尺寸*	破断载荷
	P	b <sub>1</sub>	d <sub>1</sub>	L	d <sub>2</sub>	h <sub>2</sub>	s	H	d <sub>4</sub>	A X B	Q
	mm	mm	mm	mm	mm	mm	mm	mm	mm	mm	KN
NBH250	75	30	29	69	14.5	38.1	6.3	-	-	-	221
NBH300	76.2	37.1	34.9	78	15.9	44.5	7.9	-	-	-	274
NBH450	100	58	50	118	24	65	10	144	18	100 X 100	441
NBH600	125	60	56	126	28	78	12	155	20	125 X 115	647
(链号) M315b-S-100	100	47	45	103.4	20	62	8	144	18	100 X 100	315

注：带\*尺寸可根据客户要求设计。



# 斗提机（水泥）链

Bucket elevator (Cement) chains

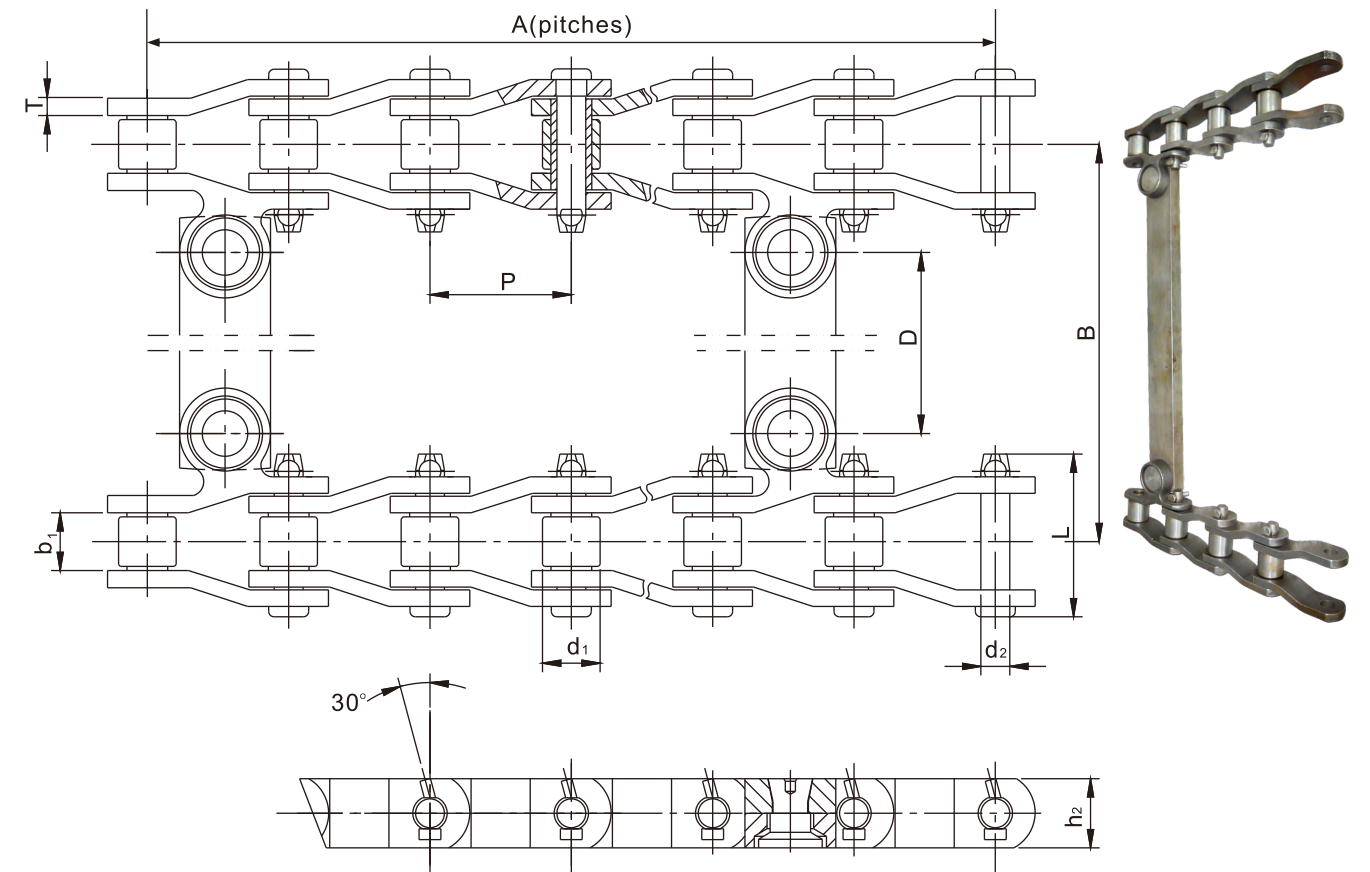


型号	节距 P mm	内节内宽 $b_1$ mm	滚子外径 d1 mm	销轴直径 d2 mm	链板宽度 h2 mm	销轴长度* L mm	安装尺寸* A X B mm	附孔直径* d4 mm	破断载荷 Q KN
NEW-100A	100	36	36	18	51	106	70 X 42	9	160
NEW-125A	125	44	42	21	62	115	84 X 50	12	224
NEW-160A	160	44	42	21	62	115	84 X 50	12	224
NEW-160B	160	47	50	25	72	131	100 X 75	14	315
NEW-200A	200	65	70	36	90	156	126 X 90	14	630

注：带\*尺寸可根据客户要求设计。

# 铺路机链

Paver machine chains



ISO/DIN 链号ISO/DIN Chain No.	节距 Pitch P mm	滚子直径 Roller diameter d1 max mm	内节内宽 Width between inner plates $b_1$ min mm	销轴直径 Pin diameter d2 max mm	销轴长度 Pin length L max mm	链板高度 plate depth h2 max mm	链板厚度 Plate thickness T mm	抗拉强度 Ultimate tensile strength Q min kN	平均抗拉强度 Average tensile strength Q0 kN
SS40SL	78.11	31.75	31.75	15.90	89.65	38.00	9.50	265.60	300.00

横梁与链条装配尺寸:

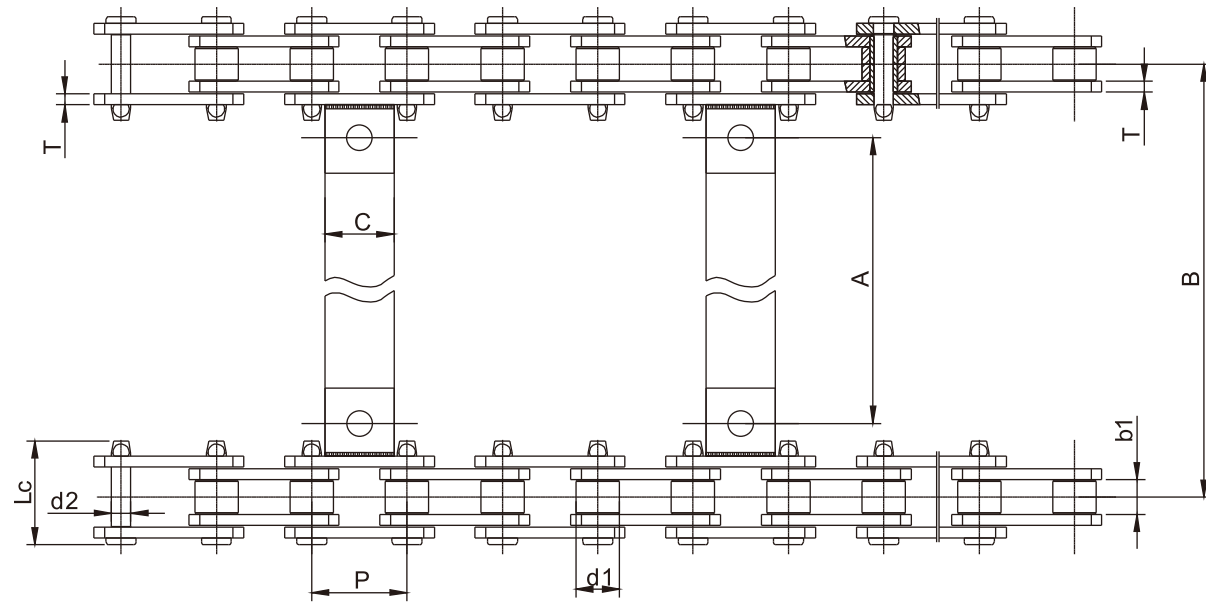
代号	A	D	B	代号	A	D	B
SS40SL-141-00	113	424.66	542.93	SS40SL -152-00	100	278.61	396.88
SS40SL -142-00	98	424.66	542.93	SS40SL -153-00	103	381.79	500.06
SS40SL -143-00	103	424.66	542.93	SS40SL -154-00	89	424.66	542.93
SS40SL-144-00	88	381.79	500.06	SS40SL -155-00	104	278.61	396.88
SS40SL -145-00	116	570.71	688.98	SS40SL -156-00	102	424.66	542.93
SS40SL -146-00	111	470.69	588.96	SS40SL -157-00	111	381.79	500.06
SS40SL -147-00	96	470.69	588.96	SS40SL -158-00	108	381.79	500.06
SS40SL -148-00	86	424.66	542.93	SS40SL -159-00	108	468.31	586.58
SS40SL -149-00	81	424.66	542.93	SS40SL -160-00	116	468.31	586.58
SS40SL -150-00	97	424.66	542.93	SS40SL -175-00	107	381.79	500.06
SS40SL -151-00	87	348.46	466.73	SS40SL -176-00	100	424.66	542.93

# 铺路机链

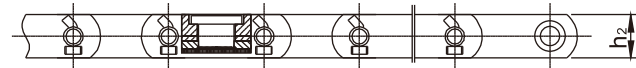
Paver machine chains

# 铺路机链

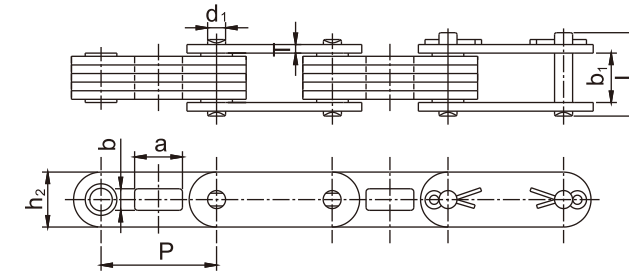
Paver machine chains



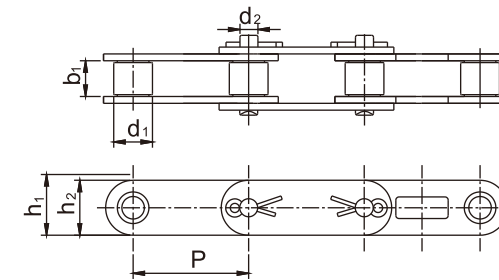
附件代号 ATT.No.	A	B	C
	mm	mm	mm
RP150	375	483	50.8
RP190	477	585	50.8



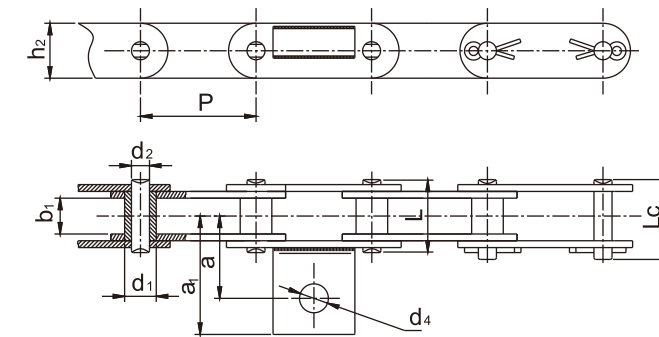
环球链号 Universal Chain No.	节距 Pitch	滚子直径 Roller diameter	内节内宽 Width between inner plates	销轴直径 Pin diameter	销轴长度 Pin length	内链板高度 Inner plate depth	链板厚度 Plate thickness	抗拉强度 Ultimate tensile strength
	P	d <sub>1</sub> max	b <sub>1</sub> min	d <sub>2</sub> max	L <sub>c</sub> max	h <sub>2</sub> max	T	Q min
	mm	mm	mm	mm	mm	mm	mm	KN
MSR1594	69.85	31.75	25.6	14.22	76.8	31.75	7.9	106.73



节距 Pitch	内节内宽 Width between inner plates	销轴直径 Pin diameter	销轴长度 Pin length	链板高度 Plate depth	链板厚度 Plate thickness	内链板结构尺寸 Inner plate dimension		抗拉强度 Ultimate tensile strength Q min	每米重量 Weight per meter q ≈
P	b <sub>1</sub>	d <sub>1</sub>	L	h <sub>2</sub>	T	a	b	kN	kg/m
75	32	14.27	54.20	36	5.60	34	14	100	7.18



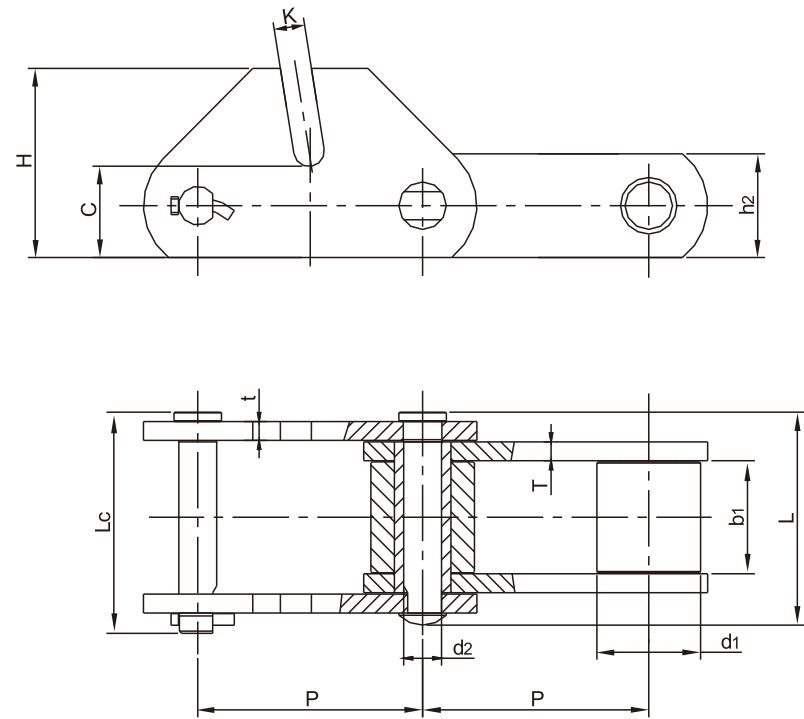
链号 Chain No.	节距 Pitch	滚子直径 Roller diameter	内节内宽 Width between inner plates	销轴直径 Pin diameter	通道高度 Chain path depth	链板高度 Plate depth	抗拉强度 Ultimate tensile strength	每米重量 Weight per meter
	P	d <sub>1</sub> max	b <sub>1</sub> min	d <sub>2</sub> max	h <sub>1</sub> min	h <sub>2</sub> max	Q min	q ≈
	mm	mm	mm	mm	mm	mm	kN	kg/m
A 5188	66.27	28.58	23.80	12.60	29.50	28.80	133.50	6.14
SGR188	66.27	22.23	26.50	11.10	29.50	28.80	143.00	6.83
C 1594	69.85	31.75	25.60	14.27	36.30	32.50	106.73	9.27



节距 Pitch	内节内宽 Width between inner plates	套筒外径 Bush diameter	链板高度 Plate depth	销轴尺寸 Pin dimension			刮板结构尺寸 Scraper dimension			抗拉强度 Ultimate tensile strength	每米重量 Weight Per meter
P	b <sub>1</sub> min	d <sub>1</sub>	h <sub>2</sub>	L	L <sub>c</sub>	d <sub>2</sub>	a	a <sub>1</sub>	d <sub>4</sub>	Q min	q ≈
mm	mm	mm	mm	mm	mm	mm	mm	mm	mm	kN	kg/m
80	35.80	26	45	72	77	15.90	56.90	81.90	20	190	9

# 沥青搅拌链

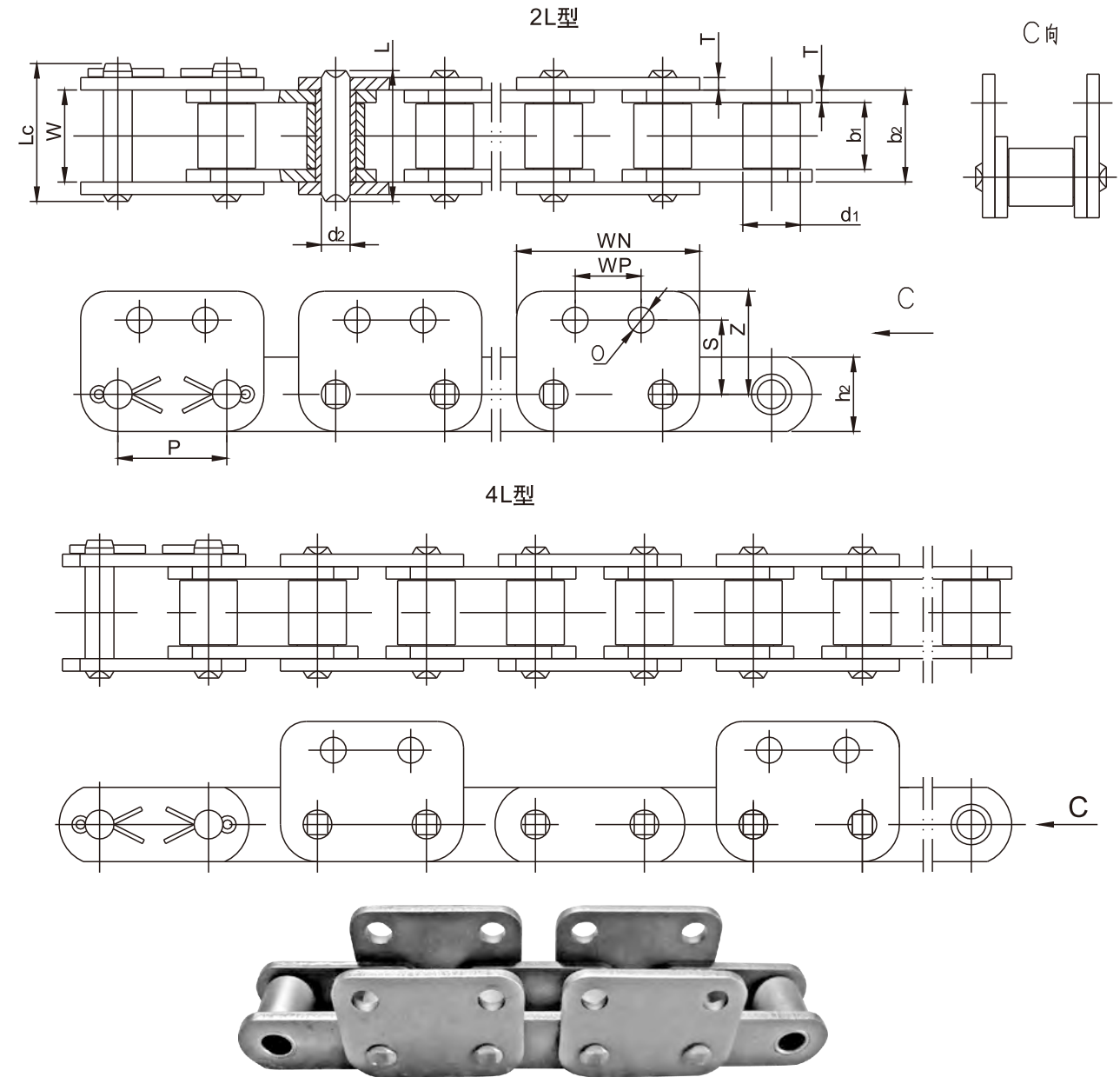
Asphalt conveyor chains



环球链号 Universal Chain No.	节距 Pitch	滚子直径 Roller diameter	内节内宽 Width between inner plates	销轴直径 Pin diameter	销轴长度 Pin length		附链板尺寸参数 Plate and attachment dimension					抗拉强度 Ultimate tensile strength	每米重量 Weight per meter
	P	d1 max	b1 min	d2 max	L max	Lc max	h2 max	H	C	K	t/T	Q min	q ≈
	mm	mm	mm	mm	mm	mm	mm	mm	mm	mm	mm	KN	Kg/m
MSR2856-M16	152.4	69.85	76.2	25.4	149.1	149.1	69.85	127.0	61.47	20.62	12.70	622.8	39.5

# 开沟机链

Trencher chains



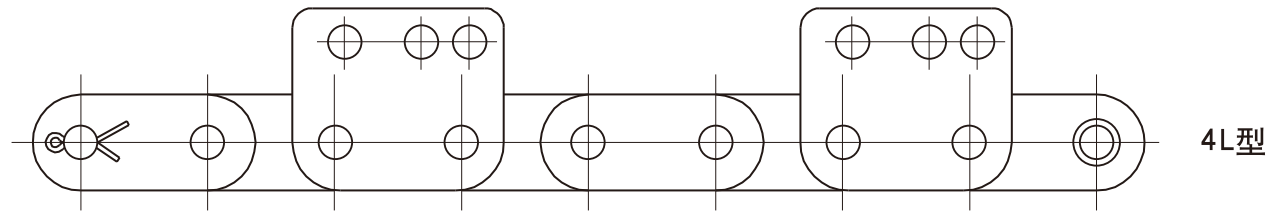
环球链号 Universal Chain No.	节距 Pitch	尺寸参数表 Dimension chart														平均抗拉强度 Average tensile strength	每米重量 Weight per meter
	P	d1 max	d2 max	b1 min	b2 max	W min	h2 max	L max	Lc max	T	O	WN	WP	S	Z	Q0 kN	q kg/m
4210-2L	42.01	22.23	11.1	25.5	35.3	35.4	28.6	50.25	52.85	4.8	10	70.6	25.4	28.6	39.7	108.5	6.8
4210-4L													46.04				6.09
4210-2L-WS													46.04				6.8
4210-4L-WS													46.04				6.09
5019-2L	50.8	28.58	14.27	32.05	45.15	45.25	38.1	64.8	69.5	6.45	13.5	93	50.8	38.1	56.65	134.4	13.21
5019-4L																	11.47

# 开沟机链

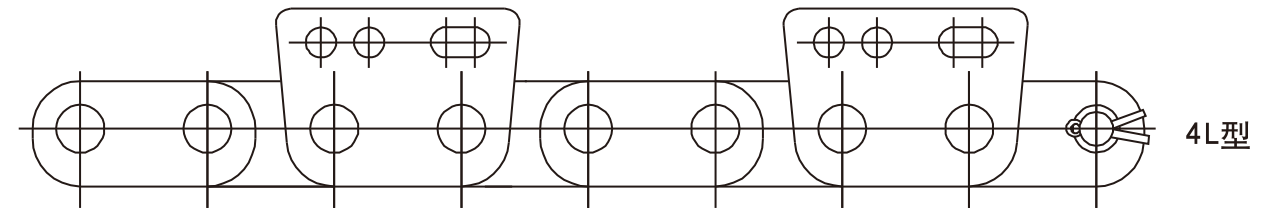
Trencher chains

# 开沟机链

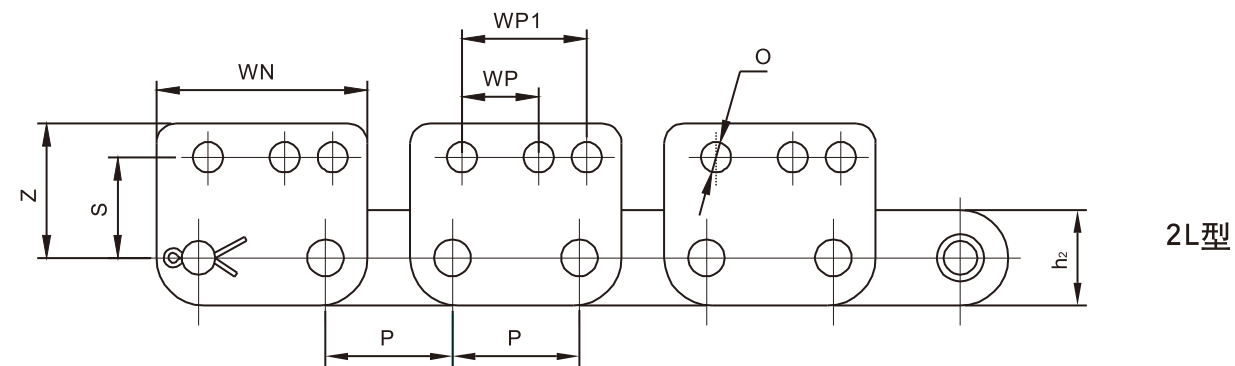
Trencher chains



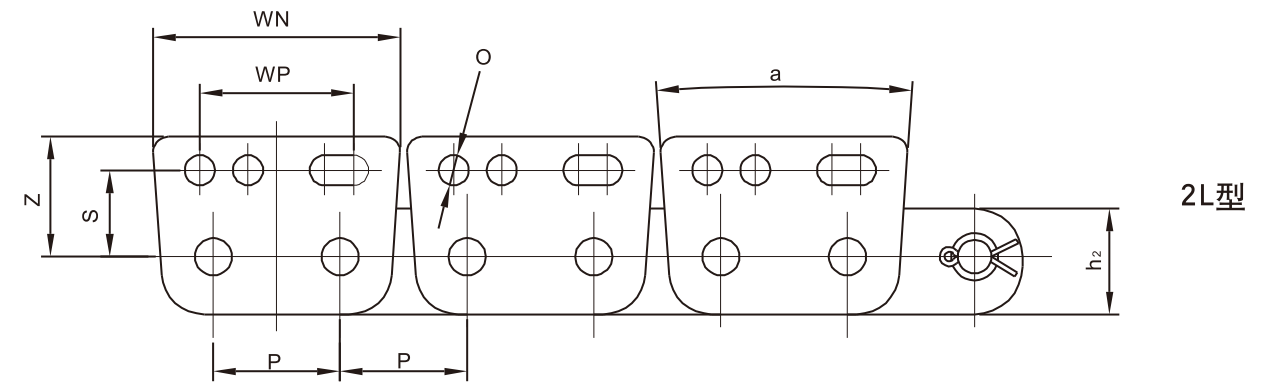
4L型



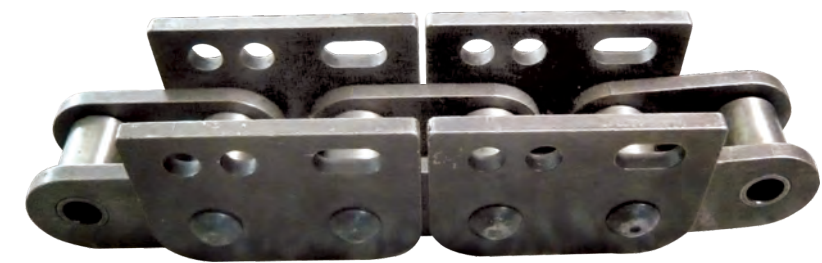
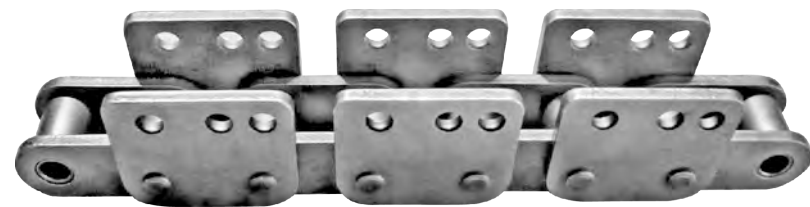
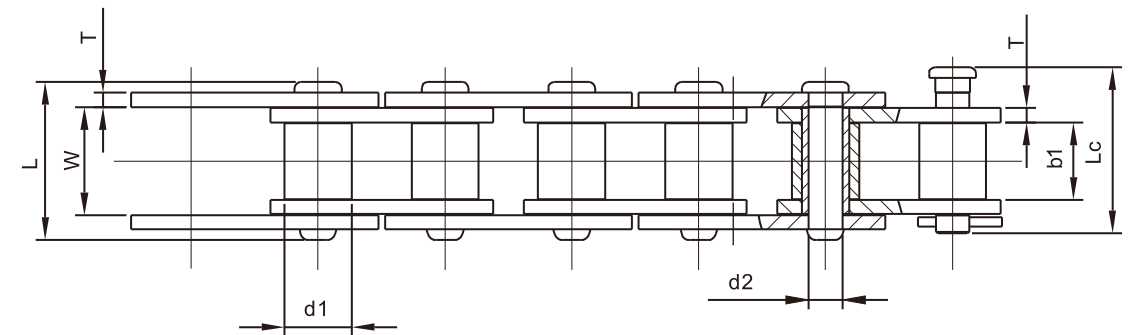
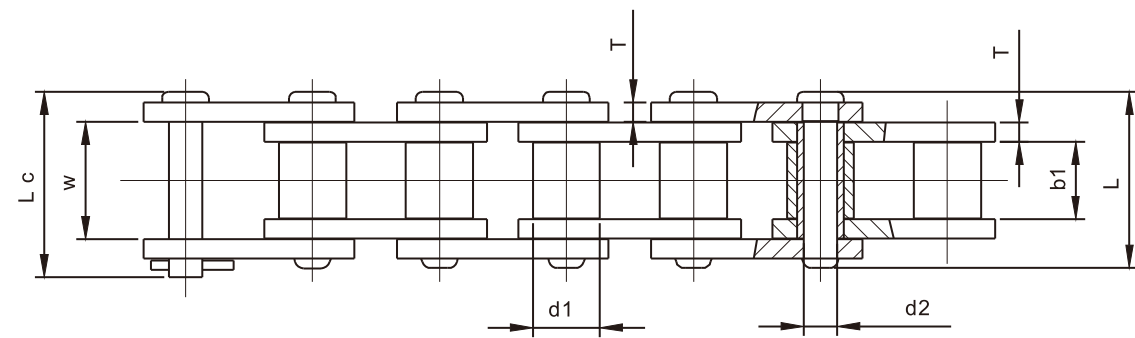
4L型



2L型



2L型



环球链号 Universal Chain No.	节距 Pitch	尺寸参数表 Dimension chart														平均抗拉强度 Average tensile strength Q <sub>0</sub>	每米重量 Weight per meter q <sub>≈</sub>
		d <sub>1</sub>	d <sub>2</sub>	b <sub>1</sub>	W	h <sub>2</sub>	L	L <sub>c</sub>	T	O	WN	WP1	WP	S	Z		
		max	max	min	min	max	max	max	mm	mm	mm	mm	mm	mm	mm		
4210H-2LSK-3	42.01	22.23	11.11	25.5	38.7	31.7	58.29	61.29	6.3	10	69.9	25.4	41.3	33.3	44.45	151.2	9.05
4210Hc-4LSK-3						59.0											

环球链号 Universal Chain No.	节距 Pitch	尺寸参数表 Dimension chart														平均抗拉强度 Average tensile strength Q <sub>0</sub>	每米重量 Weight per meter q <sub>≈</sub>
		d <sub>1</sub>	d <sub>2</sub>	b <sub>1</sub>	W	h <sub>2</sub>	L	L <sub>c</sub>	T	O	WN	WP1	WP	S	Z		
		max	max	min	min	max	max	max	mm	mm	mm	mm	mm	mm	mm		
4210-2LSK-3	42.01	22.23	11.11	25.4	35.5	34.9	53.3	54.9	4.8	10	81.66	50.8	8°	28.6	39.7	115.2	7.85
4210-4LSK-3							52.6										7.10

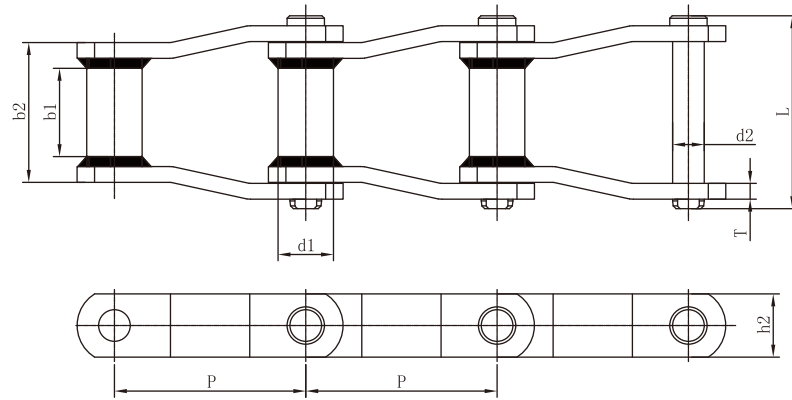






# 焊接弯板链

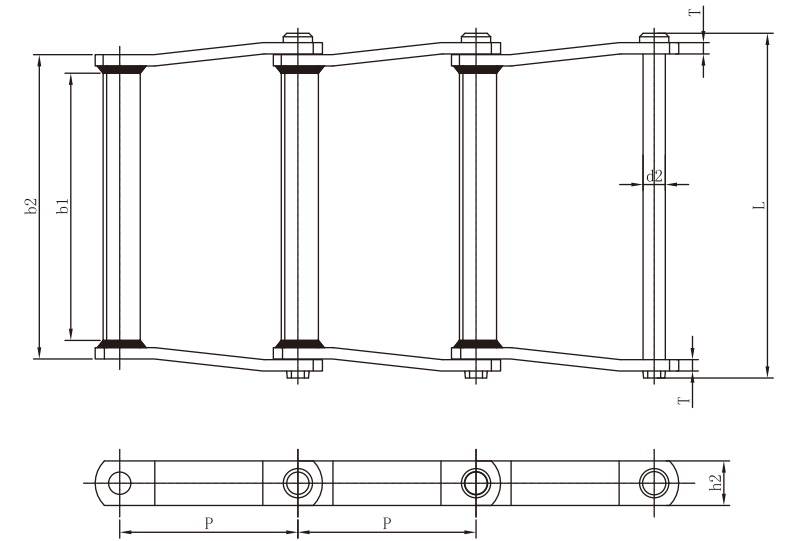
Offset sidebar welded steel chains



环球链号 Universal Chain No.	节距 Pitch	套筒直径 Outside barrel diameter	内节内宽 Width between inner plates	销轴直径 Pin diameter	销轴长度 Pin length	内节外宽 Width between outer plates	链板高度 Inner plate depth	链板厚度 Plate thickness	抗拉强度 Ultimate tensile strength	每米重量 Weight per meter
	P	d <sub>1</sub> max mm	b <sub>1</sub> min mm	d <sub>2</sub> max mm	L max mm	b <sub>2</sub> max mm	h <sub>2</sub> max mm	T	Q min kN	q ≈ kg/m
	mm	mm	mm	mm	mm	mm	mm	mm	kN	kg/m
WH78-P66.27	66.27	21.34	25.4	12.7	75	51	31.75	6.4	147	6.44
WR78-P66.27	66.27	21.34	25.4	12.7	75	51	31.75	6.4	133.5	6.45
WR78XHD-P66.95	66.95	25.4	25.4	14.29	82	50.8	31.75	9.5	178	9.21
WH82-P78.1	78.1	25.4	28.7	14.29	82.3	57.15	31.75	6.4	160	7.24
WR82-P78.1	78.1	25.4	28.7	14.29	82.3	57.15	31.75	6.4	160	7.27
WH82XHD-P78.1	78.1	31.75	28.7	19.05	96.5	60.5	38.1	9.7	254	12.73
WR82XHD-P78.1	78.1	31.75	28.7	19.05	96.5	60.5	38.1	9.7	224.3	12.76
WH124-P101.6	101.6	31.75	38.1	19.05	107	69.9	38.1	9.7	255	11.91
WH124IBR-P101.6	101.6	31.75	38.1	19.05	107	69.85	38.1	9.7	255	11.91
WR124-P101.6	101.6	31.75	38.1	19.05	107	69.9	38.1	9.7	224.3	11.91
WH124XHD-P103.2	103.2	44.45	38.1	25.4	119.5	76.2	50.8	12.7	542	22.13
WR124XHD-P103.2	103.2	44.45	38.1	25.4	119.5	76.2	50.8	12.7	380.5	22.16
WH111-P120.9	120.9	31.75	57.15	19.05	119.2	86.2	44.45	9.7	268	13.68
WH110-P152.4	152.4	31.75	47.62	19.05	113.35	76.2	38.1	9.7	250	10.12
WH106-P152.4	152.4	31.75	38.1	19.05	107	69.85	38.1	9.7	268	9.87
WR106-P152.4	152.4	31.75	38.1	19.05	107	69.85	38.1	9.7	224.3	9.85
WH132-P153.67	153.67	44.45	69.85	25.4	156	112.3	50.8	12.7	542	21.19
WR132-P153.67	153.67	44.45	69.85	25.4	156	112.3	50.8	12.7	380.5	21.25
WH132XHD-P153.67	153.67	44.45	69.85	25.4	168.86	118.6	50.8	15.88	543	24.73
WR132XHD-P153.67	153.67	44.45	69.85	25.4	168.86	118.6	50.8	15.88	472	24.86
WH132IBR-P153.67	153.67	44.45	69.85	25.4	156	112	50.8	12.7	542	21.18

# 焊接弯板链

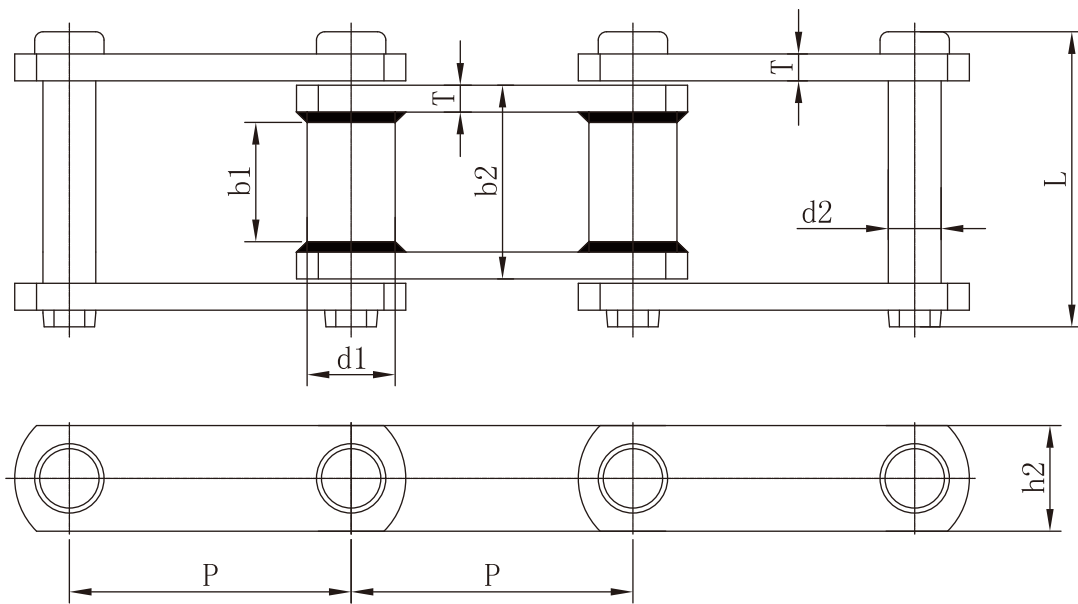
Offset sidebar welded steel chains



环球链号 Universal Chain No.	节距 Pitch	内节内宽 Width between inner plates	销轴直径 Pin diameter	销轴长度 Pin length	内节外宽 Width between outer plates	链板高度 Inner plate depth	链板厚度 Plate thickness	抗拉强度 Ultimate tensile strength	每米重量 Weight per meter
	P	b <sub>1</sub> min mm	d <sub>2</sub> max mm	L max mm	b <sub>2</sub> max mm	h <sub>2</sub> max mm	T	Q min kN	q ≈ kg/m
	mm	mm	mm	mm	mm	mm	mm	kN	kg/m
WD110-P152.4	152.4	228.6	19.05	296	260.35	38.1	9.7	227	18.05
WDH110-P152.4	152.4	228.6	19.05	296	260.35	38.1	9.7	379	18.05
WD116-P203.2	203.2	330.2	19.05	395	358.78	44.45	9.53	227	21.82
WD120-P152.4	152.4	222.25	22.23	301.6	260.35	50.8	12.7	315	32.19
WDH120-P152.4	152.4	222.25	22.23	301.6	260.35	50.8	12.7	379	32.19
WD480-P203.2	203.2	279.4	22.23	366.9	323.85	50.8	12.7	315	29.52
WDH480-P203.2	203.2	279.4	22.23	366.9	323.85	50.8	12.7	380	29.52
WDRS480-SH-P203.2	203.2	279.4	25.4	368.15	323.85	50.8	12.7	380	30.8
WDRS480XHD-SH-P203.2	203.2	279.4	25.4	380.85	330.2	50.8	15.88	543	33.77
WD480XHD-P203.2	203.2	279.4	25.4	380.85	330.2	50.8	15.88	543	33.77
WD580-P203.2	203.2	/	25.4	368.3	323.85	50.8	12.7	314	30.78
WDH580-P203.2	203.2	/	25.4	368.3	323.85	50.8	12.7	547	30.78

# 焊接直板链

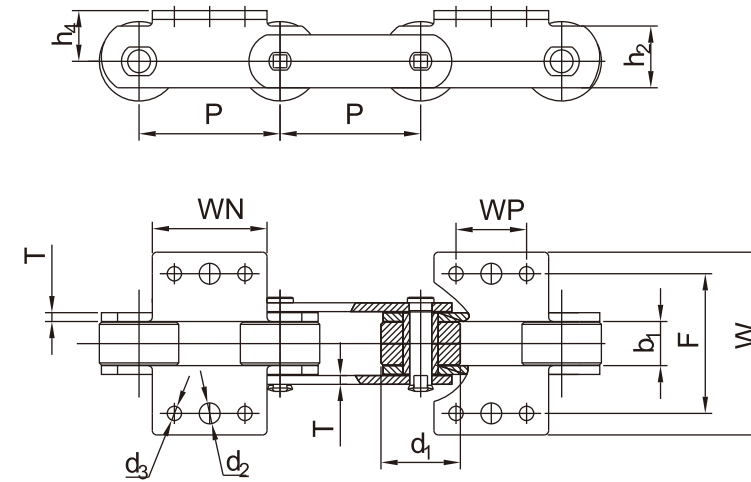
Straight sidebar welded steel chains



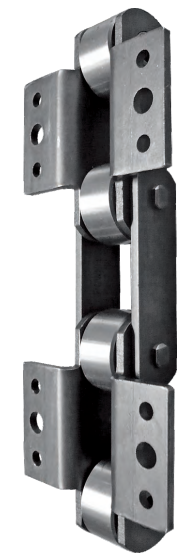
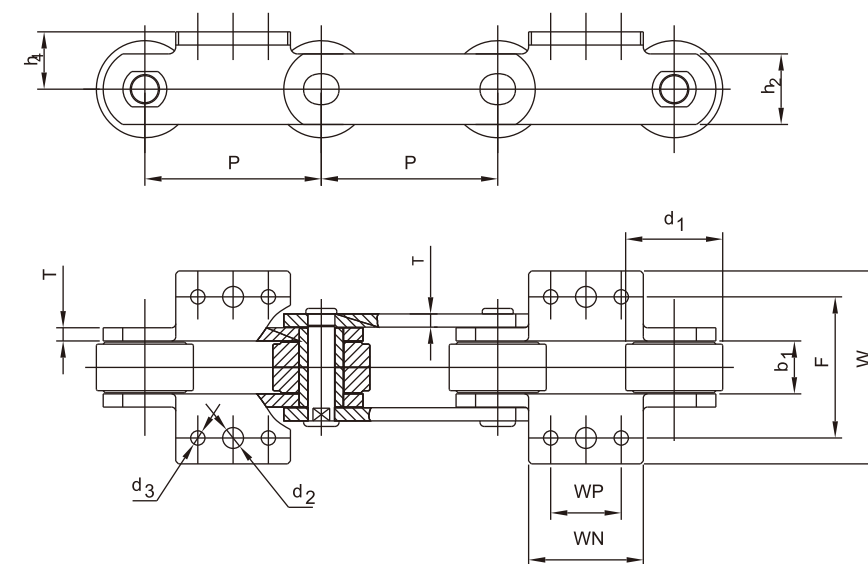
环球链号 Universal Chain No.	节距 Pitch P	套筒直径 Outside barrel diameter d <sub>1</sub> max	内节内宽 Width between inner plates b <sub>1</sub> min	销轴直径 Pin diameter d <sub>2</sub> max	销轴长度 Pin length L max	内节外宽 Width between outer plates b <sub>2</sub> max	链板高度 Inner plate depth h <sub>2</sub> max	链板厚度 Plate thickness T	抗拉强度 Ultimate tensile strength Q	每米重量 Weight per meter q
	mm	mm	mm	mm	mm	mm	mm	mm	min kN	≈ kg/m
WRC124-P101.6	101.6	31.75	38.1	19.05	107	69.85	38.1	9.7	224.3	11.87
WHC124-P101.6	101.6	31.75	38.1	19.05	107	69.85	38.1	9.7	255	11.9
WHC132IBR-P153.67	153.67	44.45	69.85	25.4	156	112	50.8	12.7	542	21.16

# K型履带附板链

K type caterpillar chains with attachment



环球链号 Universal Chain No.	节距 Pitch P	尺寸参数表 Dimension chart											平均抗拉强度 Average tensile strength Q <sub>0</sub>	每米重量 Weight per meter q
	mm	d <sub>1</sub> max mm	b <sub>1</sub> min mm	h <sub>2</sub> mm	h <sub>4</sub> mm	T mm	d <sub>2</sub> mm	d <sub>3</sub> mm	F mm	W mm	WN mm	WP mm	kN	≈ kg/m
P101.6-2LK-3	101.6	57.15	31.75	44.45	36.5	6.35	15	10.1	101.6	132.6	82.55	50.8	200.9	14.05



环球链号 Universal Chain No.	节距 Pitch P	尺寸参数表 Dimension chart											平均抗拉强度 Average tensile strength Q <sub>0</sub>	每米重量 Weight per meter q
	mm	d <sub>1</sub> max mm	b <sub>1</sub> min mm	h <sub>2</sub> mm	h <sub>4</sub> mm	T mm	d <sub>2</sub> mm	d <sub>3</sub> mm	F mm	W mm	WN mm	WP mm	kN	≈ kg/m
P127-2LK-3	127.0	69.85	38.1	50.8	41.28	9.5	14.8	10.3	101.6	138.9	82.55	50.8	354	21.95